


GARRELL 
 ASSOCIATES INC.
 5991 PARKWAY NORTH BLVD., SUITE D
 CUMMING, GA 30040
 PH.(770)-614-3239 FAX(770)-614-5948
 WWW.GARRELLASSOCIATES.COM

WOODFIN FARM COTTAGE B

PLAN #19005 3,299 SQ.FT.
 WIDTH 81'-6" RIDGE HGT. 27'-10"
 DEPTH 93'-5" (HOUSE 78'-5")
 FOUNDATION: BASEMENT

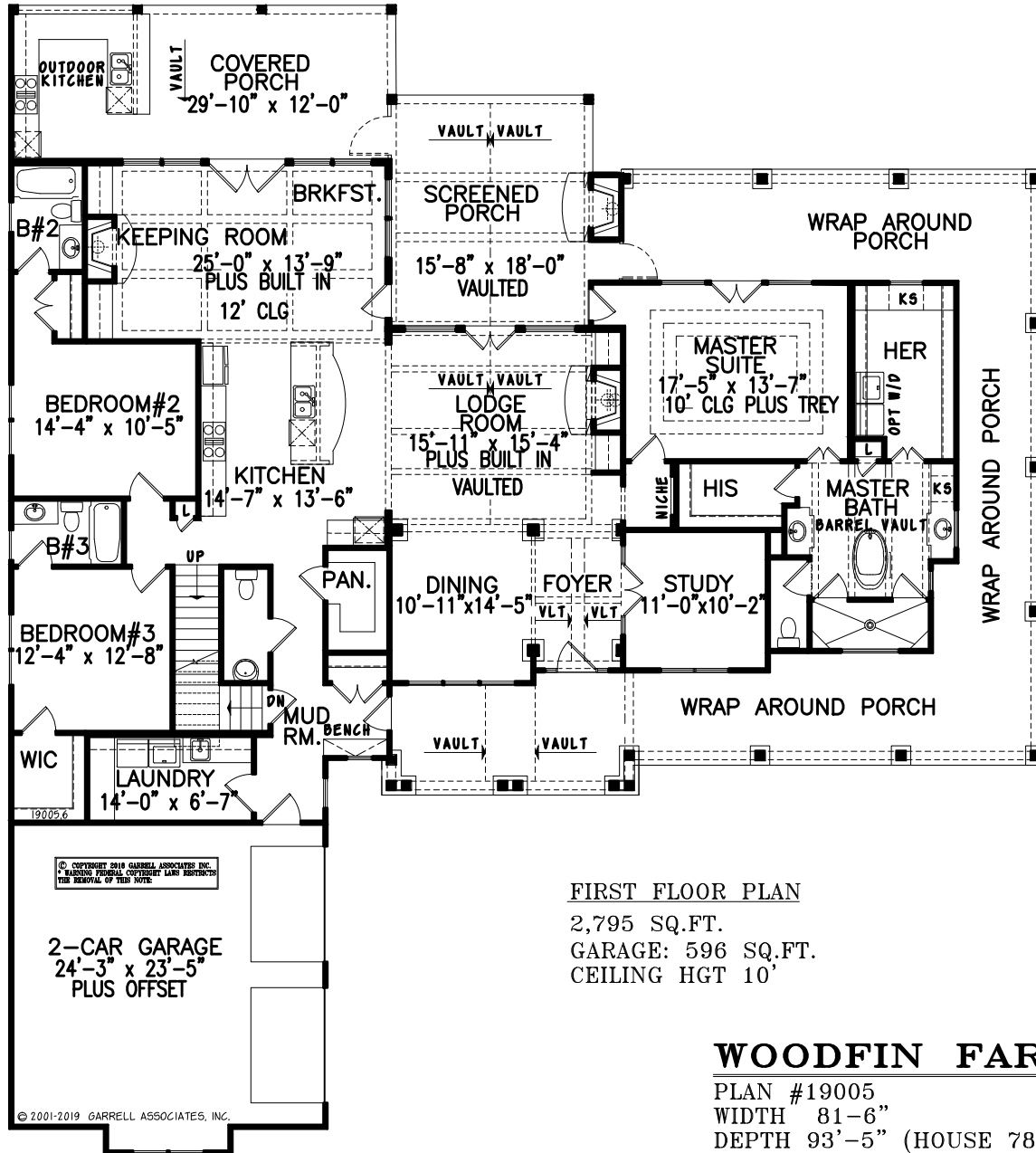
ARTIST'S CONCEPTION MAY VARY FROM ACTUAL PLAN

© 2019 GARRELL ASSOCIATES, INC.

GARRELL

ASSOCIATES INC.

5991 PARKWAY NORTH BLVD., SUITE D
 CUMMING, GA 30040
 PH.(770)-614-3239 FAX(770)-614-5948
 WWW.GARRELLASSOCIATES.COM



© COPYRIGHT 2019 GARRELL ASSOCIATES INC.
 *WARNING FEDERAL COPYRIGHT LAWS RESTRICTS
 THE REMOVAL OF THIS NOTE.

2-CAR GARAGE
 24'-3" x 23'-5"
 PLUS OFFSET

© 2001-2019 GARRELL ASSOCIATES, INC.

FIRST FLOOR PLAN

2,795 SQ.FT.
 GARAGE: 596 SQ.FT.
 CEILING HGT 10'

WOODFIN FARM COTTAGE B

PLAN #19005
 WIDTH 81'-6"
 DEPTH 93'-5" (HOUSE 78'-5")
 FOUNDATION: BASEMENT

3,299 SQ.FT.
 RIDGE HGT. 27'-10"

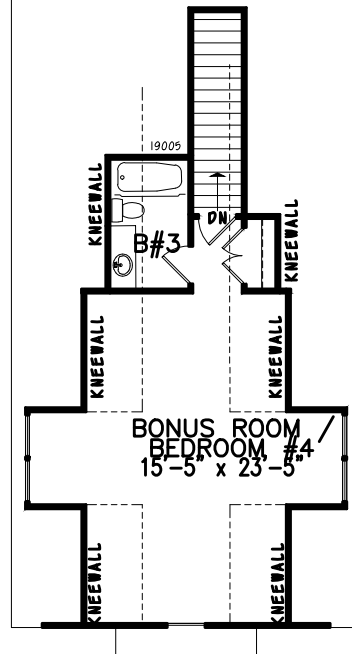
ARTIST'S CONCEPTION MAY VARY FROM ACTUAL PLAN

© 2019 GARRELL ASSOCIATES, INC.

GARRELL

ASSOCIATES INC.

5991 PARKWAY NORTH BLVD., SUITE D
CUMMING, GA 30040
PH.(770)-614-3239 FAX(770)-614-5948
WWW.GARRELLASSOCIATES.COM



SECOND FLOOR
504 SQ.FT.
CEILING HGT 9'

WOODFIN FARM COTTAGE B

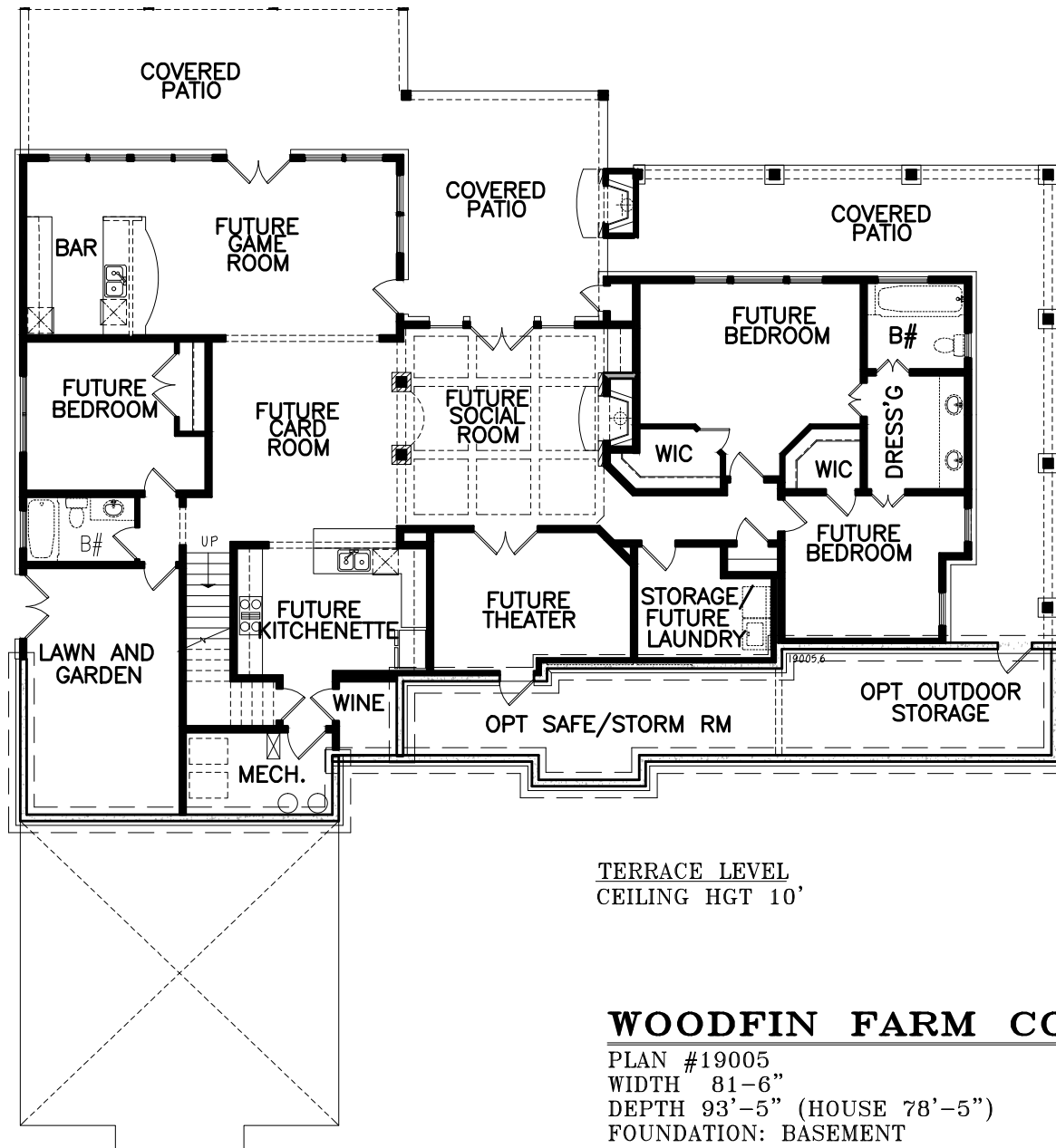
PLAN #19005
WIDTH 81'-6"
DEPTH 93'-5" (HOUSE 78'-5")
FOUNDATION: BASEMENT

3,299 SQ.FT.
RIDGE HGT. 27'-10"

GARRELL

ASSOCIATES INC.

5991 PARKWAY NORTH BLVD., SUITE D
CUMMING, GA 30040
PH.(770)-614-3239 FAX(770)-614-5948
WWW.GARRELLASSOCIATES.COM



ARTIST'S CONCEPTION MAY VARY FROM ACTUAL PLAN

© 2019 GARRELL ASSOCIATES, INC.

GARRELL

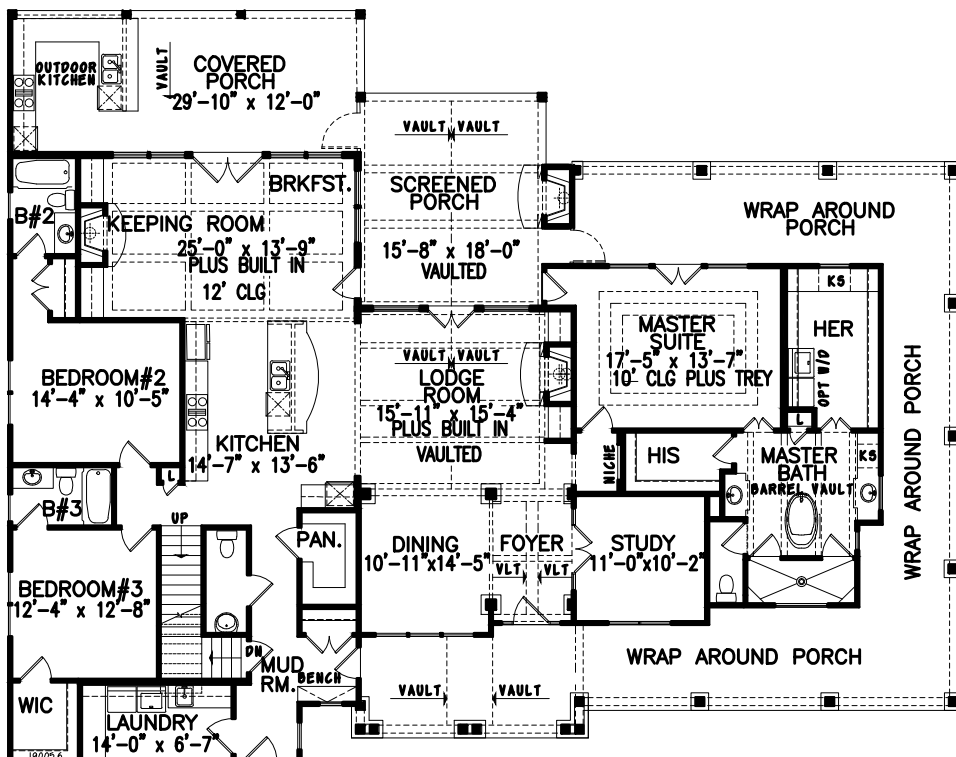
ASSOCIATES INC.

5991 PARKWAY NORTH BLVD., SUITE D
 CUMMING, GA 30040
 PH.(770)-614-3239 FAX(770)-614-5948
 WWW.GARRELLASSOCIATES.COM



19005.6

© 2001-2019 GARRELL ASSOCIATES, INC.

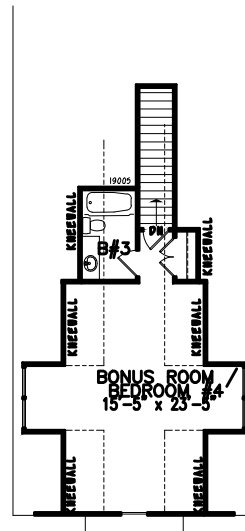


FIRST FLOOR PLAN

2,795 SQ.FT.
 GARAGE: 596 SQ.FT.
 CEILING HGT 10'

SECOND FLOOR

504 SQ.FT.
 CEILING HGT 9'



© 2001-2018 GARRELL ASSOCIATES, INC.

WOODFIN FARM COTTAGE B

PLAN #19005
 WIDTH 81'-6"
 DEPTH 93'-5" (HOUSE 78'-5")
 FOUNDATION: BASEMENT

3,299 SQ.FT.
 RIDGE HGT. 27'-10"

ARTIST'S CONCEPTION MAY VARY FROM ACTUAL PLAN

© 2019 GARRELL ASSOCIATES, INC.