



GARRELL 

ASSOCIATES INC.

5991 PARKWAY NORTH BLVD., SUITE D

CUMMING, GA 30040

PH.(770)-614-3239 FAX(770)-614-5948

WWW.GARRELLASSOCIATES.COM

WOODFIN FARM COTTAGE C

PLAN #19006

WIDTH 81'-6"

DEPTH 93'-5" (HOUSE 78'-5")

FOUNDATION: BASEMENT

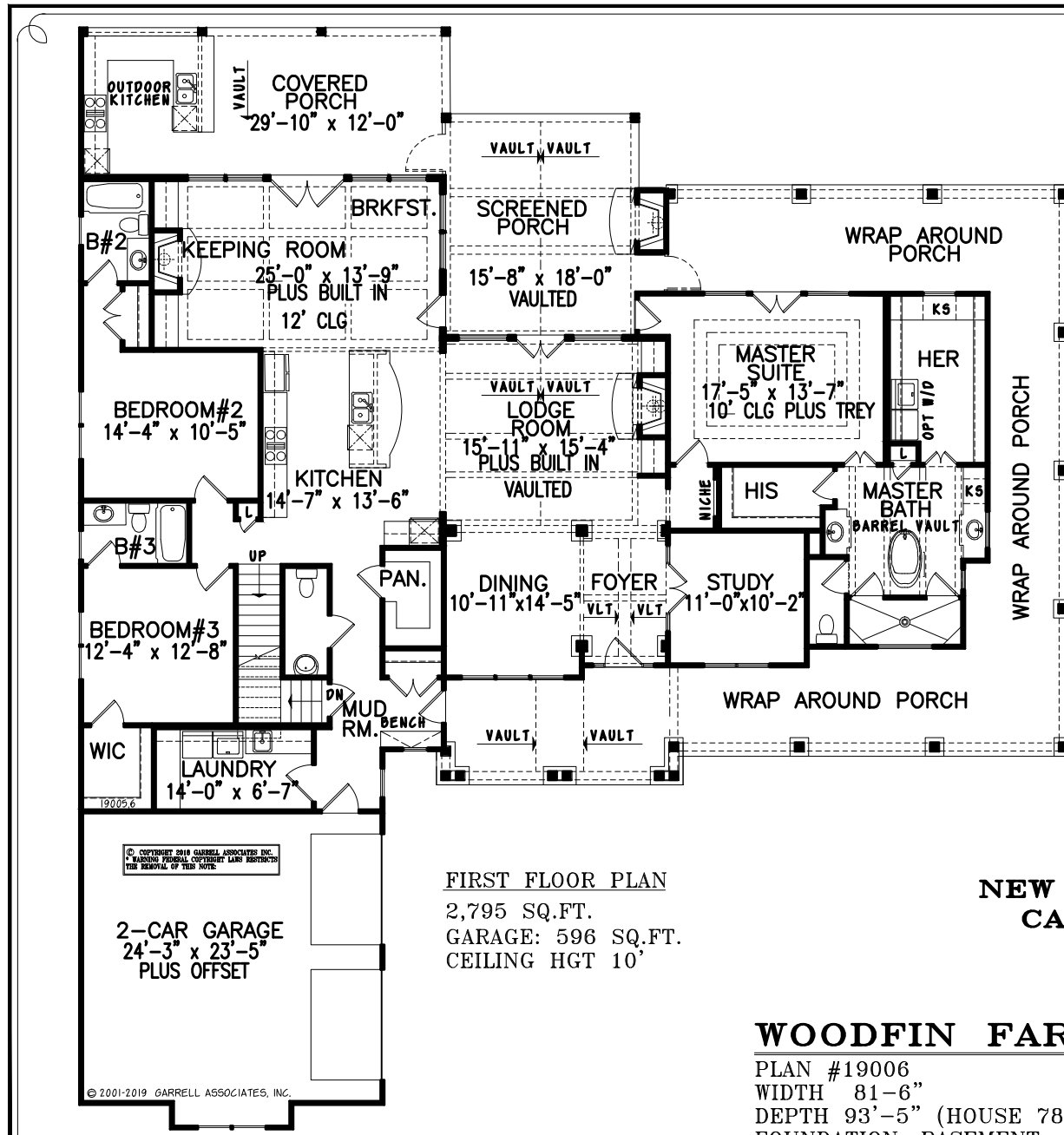
3,722 SQ.FT.

RIDGE HGT. 27'-10"

**NEW DESIGN IN PROGRESS
CALL FOR AVAILABILITY**

ARTIST'S CONCEPTION MAY VARY FROM ACTUAL PLAN

© 2019 GARRELL ASSOCIATES, INC.



GARRELL

ASSOCIATES INC.
 5991 PARKWAY NORTH BLVD., SUITE D
 CUMMING, GA 30040
 PH.(770)-614-3239 FAX(770)-614-5948
 WWW.GARRELLASSOCIATES.COM

FIRST FLOOR PLAN
 2,795 SQ.FT.
 GARAGE: 596 SQ.FT.
 CEILING HGT 10'

NEW DESIGN IN PROGRESS
CALL FOR AVAILABILITY

WOODFIN FARM COTTAGE C

PLAN #19006
 WIDTH 81'-6"
 DEPTH 93'-5" (HOUSE 78'-5")
 FOUNDATION: BASEMENT

3,722 SQ.FT.
 RIDGE HGT. 27'-10"

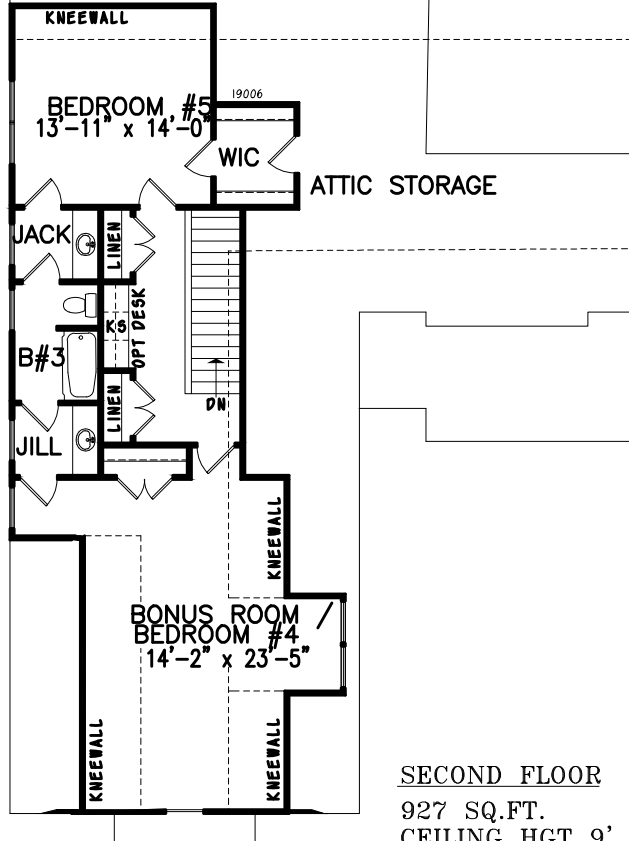
© COPYRIGHT 2019 GARRELL ASSOCIATES INC.
 *WARNING FEDERAL COPYRIGHT LAWS RESTRICTS
 THE REMOVAL OF THIS NOTE.

© 2001-2019 GARRELL ASSOCIATES, INC.

ARTIST'S CONCEPTION MAY VARY FROM ACTUAL PLAN

© 2019 GARRELL ASSOCIATES, INC.

© 2001-2019 GARRELL ASSOCIATES, INC.



SECOND FLOOR
927 SQ.FT.
CEILING HGT 9'

WOODFIN FARM COTTAGE C

PLAN #19006
WIDTH 81'-6"
DEPTH 93'-5" (HOUSE 78'-5")
FOUNDATION: BASEMENT

3,722 SQ.FT.
RIDGE HGT. 27'-10"



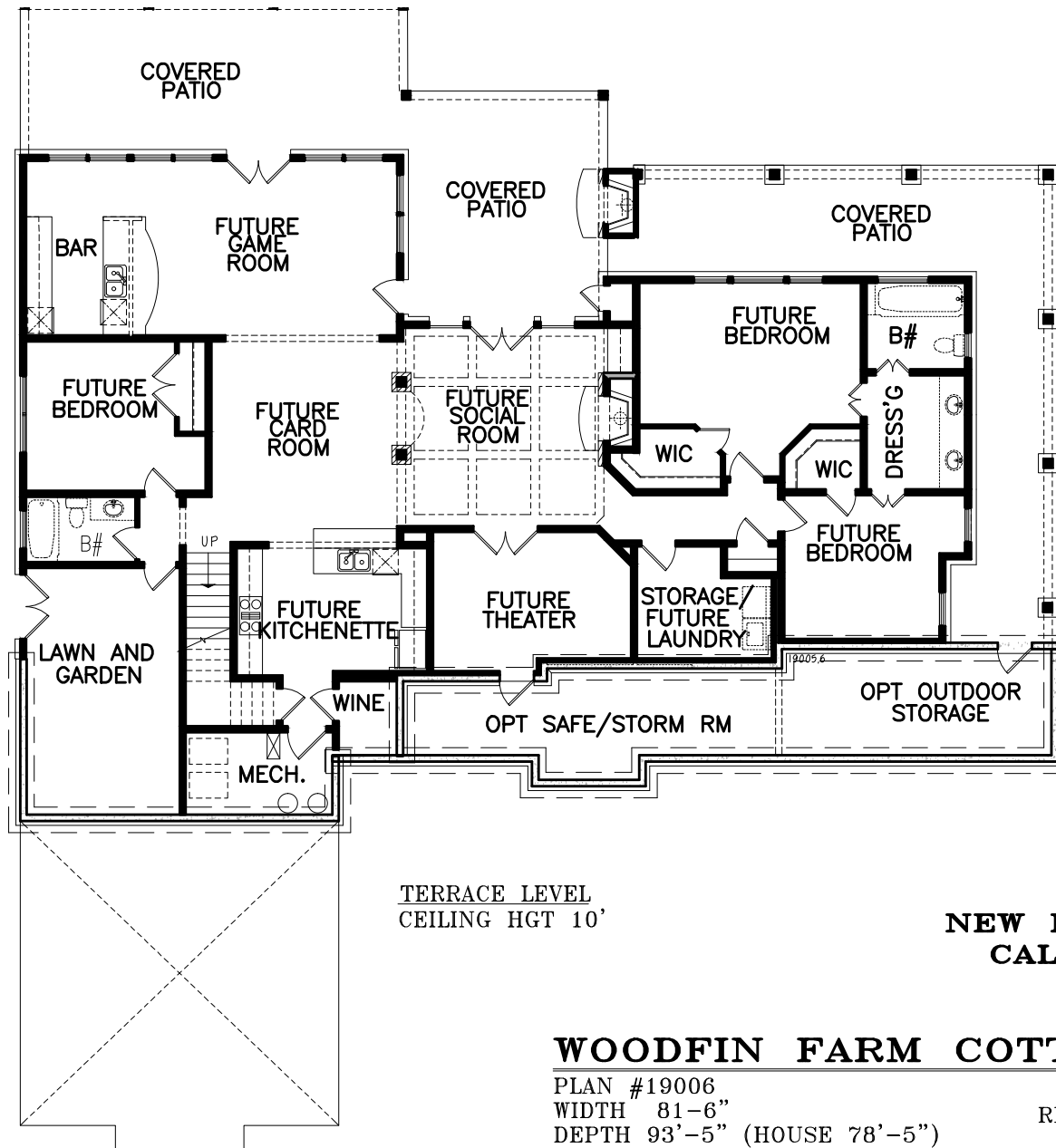
ASSOCIATES INC.
5991 PARKWAY NORTH BLVD., SUITE D
CUMMING, GA 30040
PH.(770)-614-3239 FAX(770)-614-5948
WWW.GARRELLASSOCIATES.COM

**NEW DESIGN IN PROGRESS
CALL FOR AVAILABILITY**

GARRELL

ASSOCIATES INC.

5991 PARKWAY NORTH BLVD., SUITE D
CUMMING, GA 30040
PH.(770)-614-3239 FAX(770)-614-5948
WWW.GARRELLASSOCIATES.COM



TERRACE LEVEL
CEILING HGT 10'

**NEW DESIGN IN PROGRESS
CALL FOR AVAILABILITY**

WOODFIN FARM COTTAGE C

PLAN #19006
WIDTH 81'-6"
DEPTH 93'-5" (HOUSE 78'-5")
FOUNDATION: BASEMENT

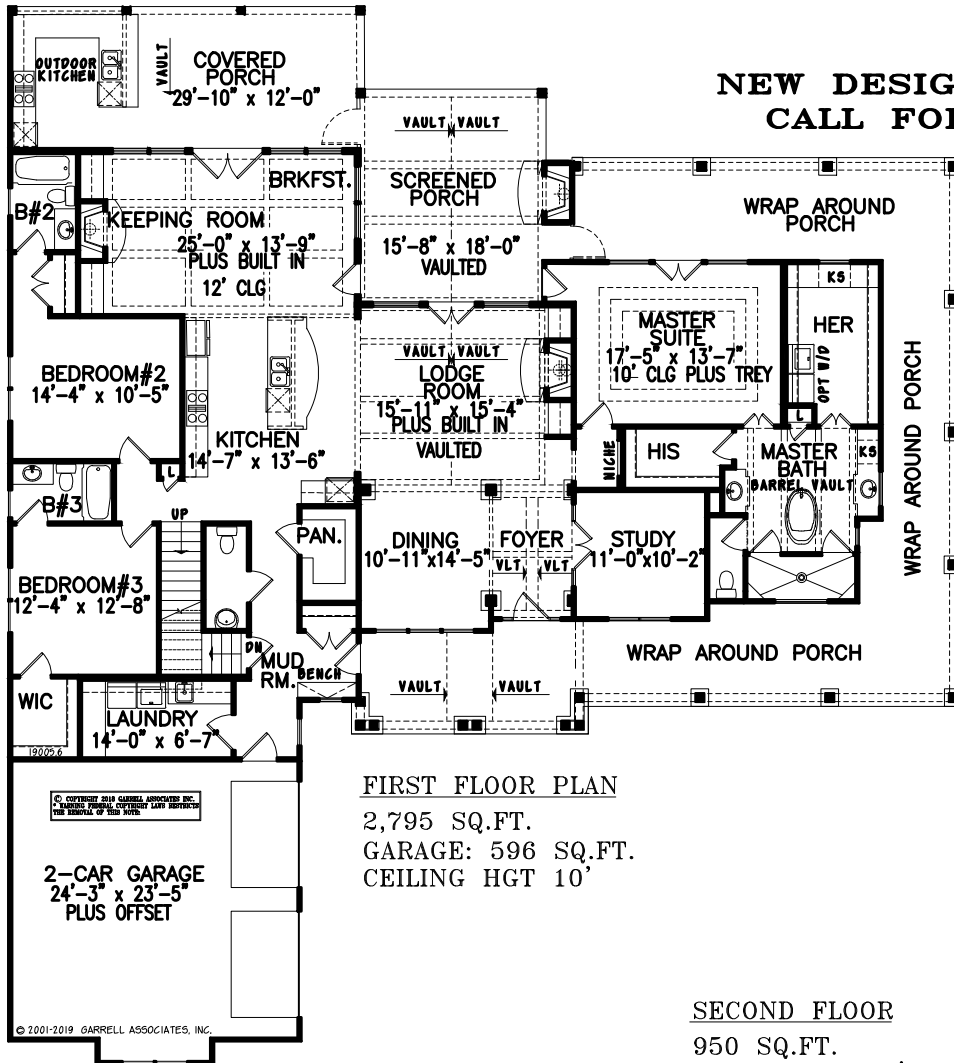
3,722 SQ.FT.
RIDGE HGT. 27'-10"



19005.6

© 2001-2019 GARRELL ASSOCIATES, INC.

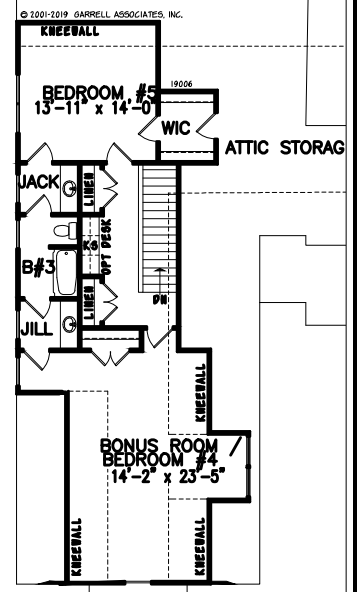
**NEW DESIGN IN PROGRESS
 CALL FOR AVAILABILITY**



FIRST FLOOR PLAN

2,795 SQ.FT.
 GARAGE: 596 SQ.FT.
 CEILING HGT 10'

SECOND FLOOR
 950 SQ.FT.
 CEILING HGT 9'



WOODFIN FARM COTTAGE C

PLAN #19006
 WIDTH 81'-6"
 DEPTH 93'-5" (HOUSE 78'-5")
 FOUNDATION: BASEMENT

3,722 SQ.FT.
 RIDGE HGT. 27'-10"