



FRONT ELEVATION

GARRELL 

ASSOCIATES INC.

5991 PARKWAY NORTH BLVD., SUITE D
 CUMMING, GA 30040
 PH.(770)-614-3239 FAX(770)-614-5948
 WWW.GARRELLASSOCIATES.COM



REAR ELEVATION

AMICALOLA COTTAGE F

PLAN #19051
 WIDTH 116'-4" 3,377 SQ.FT.
 DEPTH 79'-3" (HOUSE ONLY 71'-6") RIDGE HGT. 31'-4"
 FOUNDATION: BASEMENT

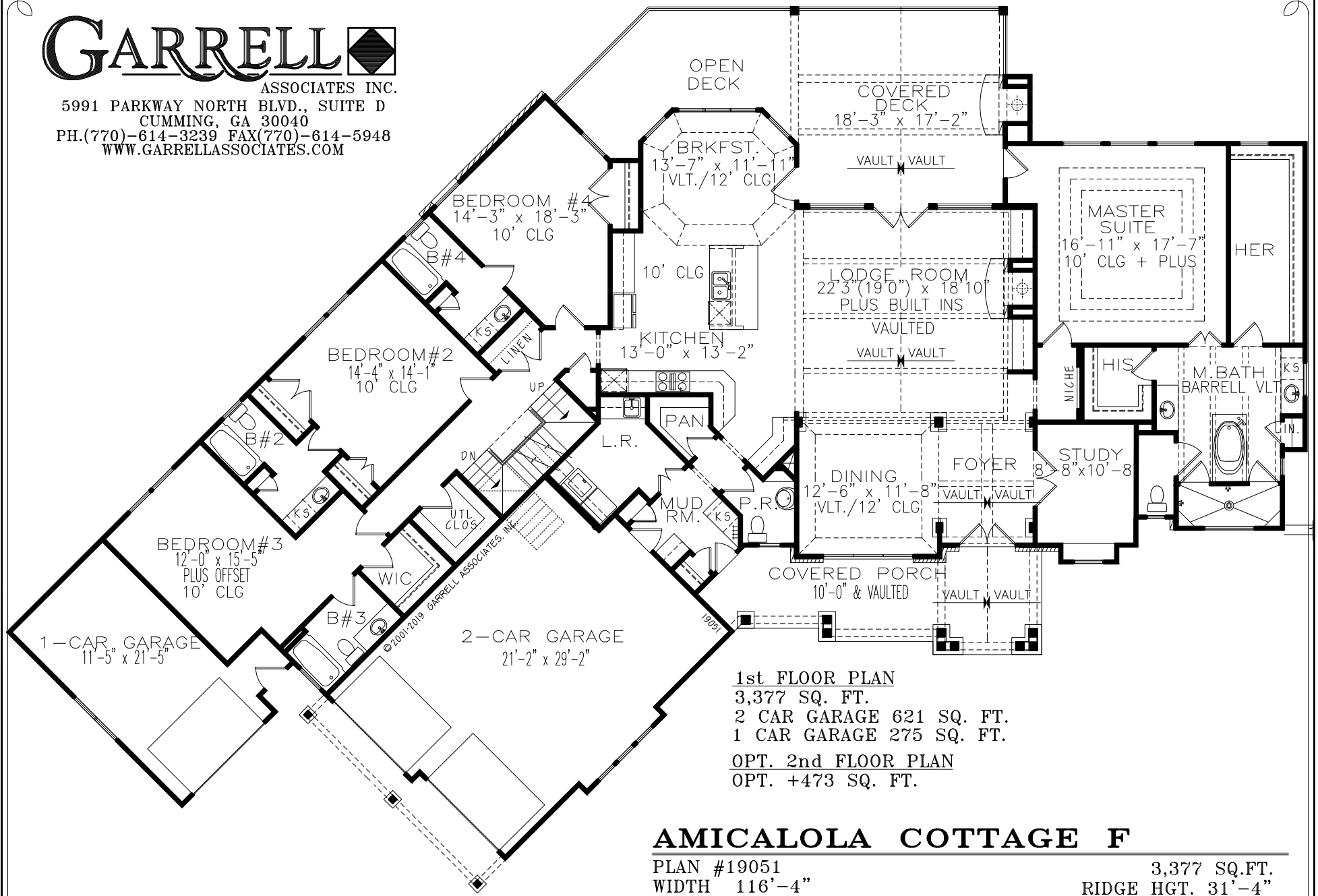
ARTIST'S CONCEPTION MAY VARY FROM ACTUAL PLAN

© 2000-2018 GARRELL ASSOCIATES, INC.

GARRELL

ASSOCIATES INC.

5991 PARKWAY NORTH BLVD., SUITE D
 CUMMING, GA 30040
 PH.(770)-614-3239 FAX(770)-614-5948
 WWW.GARRELLASSOCIATES.COM



1st FLOOR PLAN
 3,377 SQ. FT.
 2 CAR GARAGE 621 SQ. FT.
 1 CAR GARAGE 275 SQ. FT.
OPT. 2nd FLOOR PLAN
 OPT. +473 SQ. FT.

AMICALOLA COTTAGE F

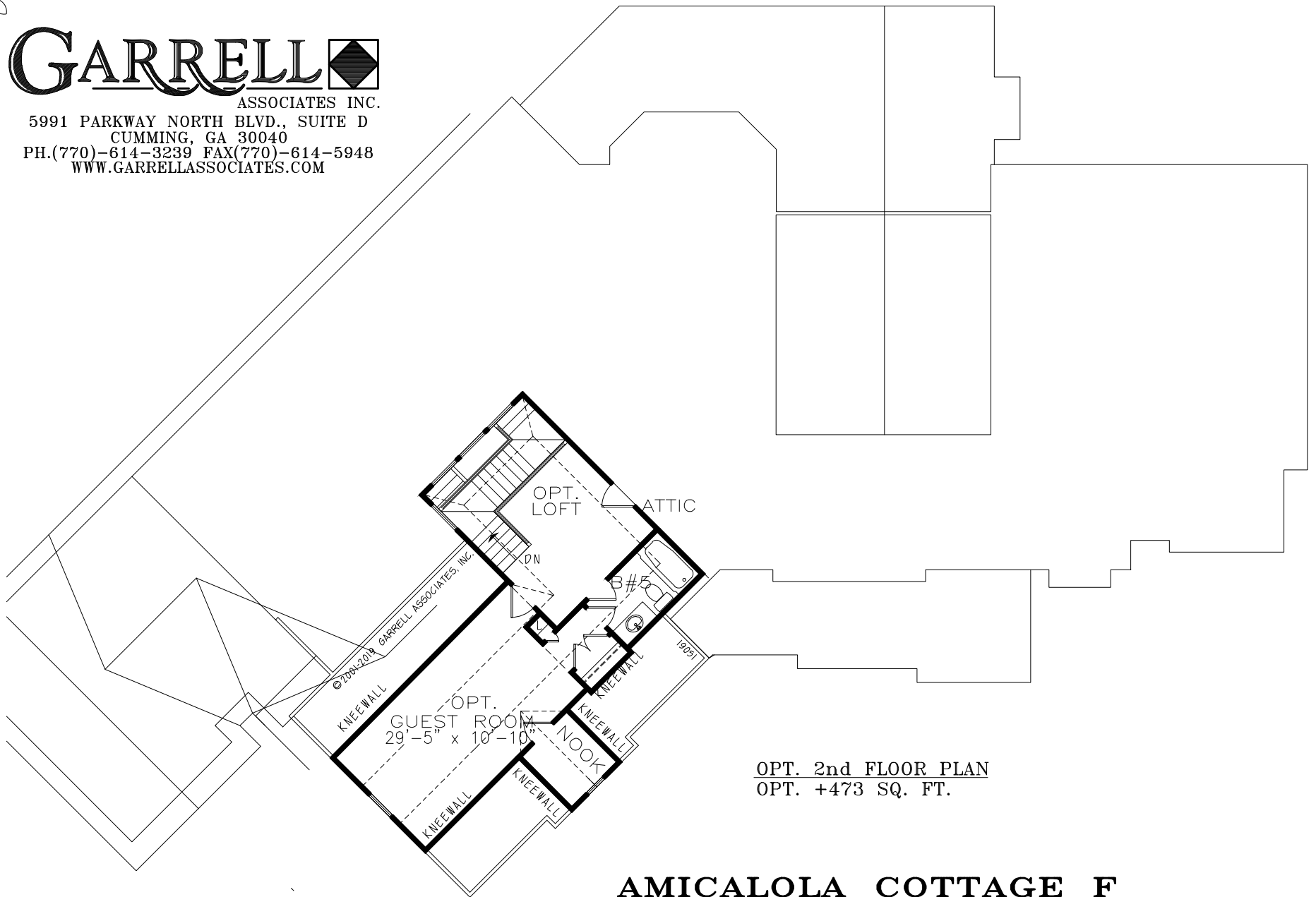
PLAN #19051
 WIDTH 116'-4"
 DEPTH 79'-3" (HOUSE ONLY 71'-6")
 FOUNDATION: BASEMENT

3,377 SQ.FT.
 RIDGE HGT. 31'-4"

GARRELL

ASSOCIATES INC.

5991 PARKWAY NORTH BLVD., SUITE D
CUMMING, GA 30040
PH.(770)-614-3239 FAX(770)-614-5948
WWW.GARRELLASSOCIATES.COM



OPT. 2nd FLOOR PLAN
OPT. +473 SQ. FT.

AMICALOLA COTTAGE F

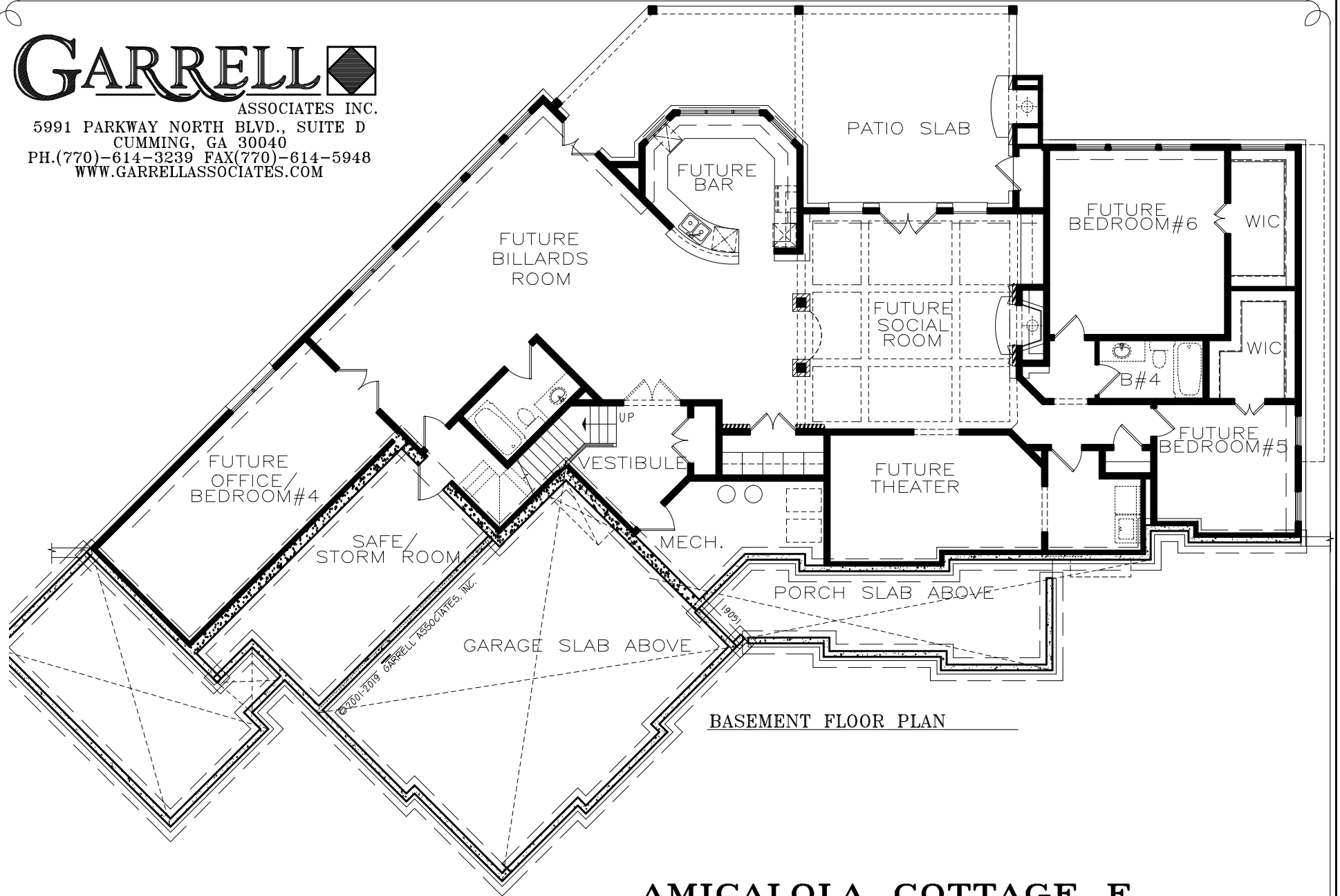
PLAN #19051
WIDTH 116'-4"
DEPTH 79'-3" (HOUSE ONLY 71'-6")
FOUNDATION: BASEMENT

3,377 SQ.FT.
RIDGE HGT. 31'-4"

GARRELL

ASSOCIATES INC.

5991 PARKWAY NORTH BLVD., SUITE D
CUMMING, GA 30040
PH.(770)-614-3239 FAX(770)-614-5948
WWW.GARRELLASSOCIATES.COM



AMICALOLA COTTAGE F

PLAN #19051

WIDTH 116'-4"

DEPTH 79'-3" (HOUSE ONLY 71'-6")

FOUNDATION: BASEMENT

3,377 SQ.FT.

RIDGE HGT. 31'-4"

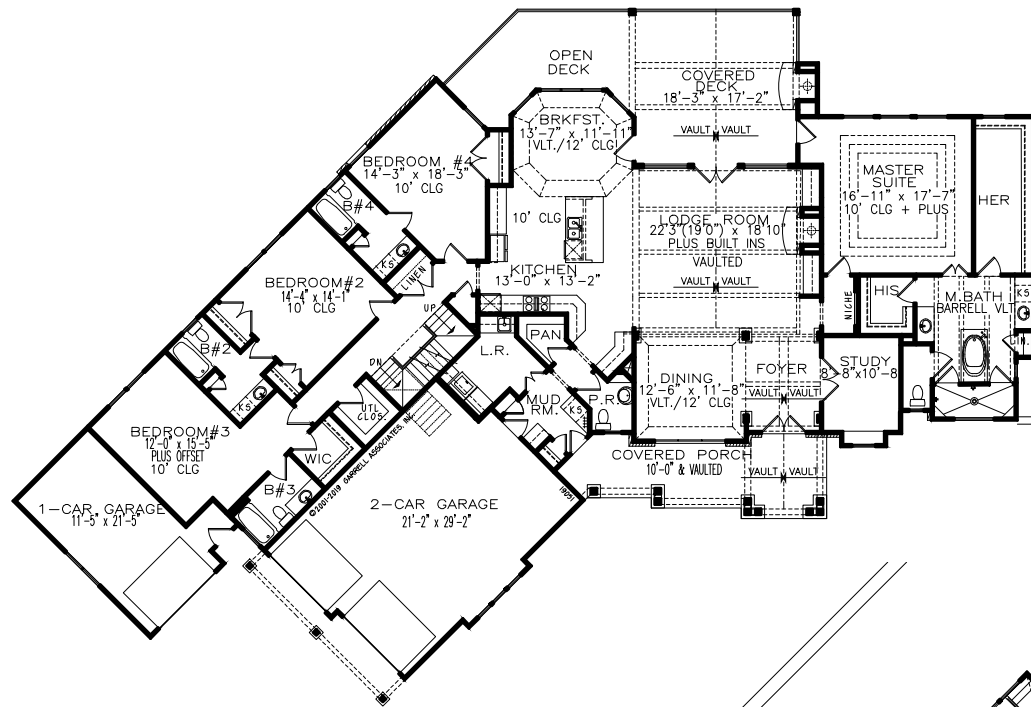
GARRELL

ASSOCIATES INC.

5991 PARKWAY NORTH BLVD., SUITE D
 CUMMING, GA 30040
 PH.(770)-614-3239 FAX(770)-614-5948
 WWW.GARRELLASSOCIATES.COM



FRONT ELEVATION



1st FLOOR PLAN

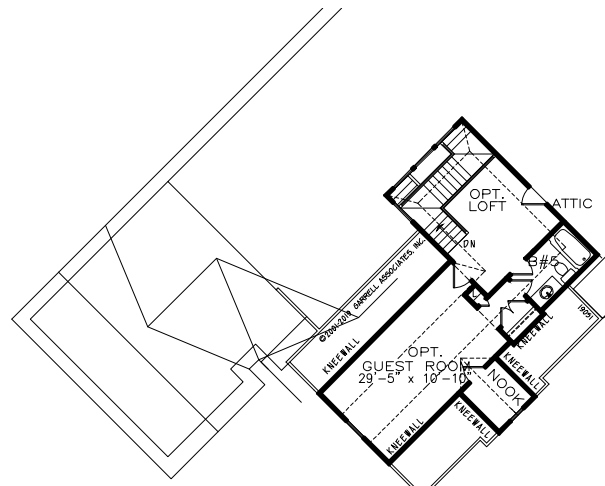
3,377 SQ. FT.

2 CAR GARAGE 621 SQ. FT.

1 CAR GARAGE 275 SQ. FT.

OPT. 2nd FLOOR PLAN

OPT. +473 SQ. FT.



AMICALOLA COTTAGE F

PLAN #19051

WIDTH 116'-4"

DEPTH 79'-3" (HOUSE ONLY 71'-6")

FOUNDATION: BASEMENT

3,377 SQ.FT.

RIDGE HGT. 31'-4"

ARTIST'S CONCEPTION MAY VARY FROM ACTUAL PLAN

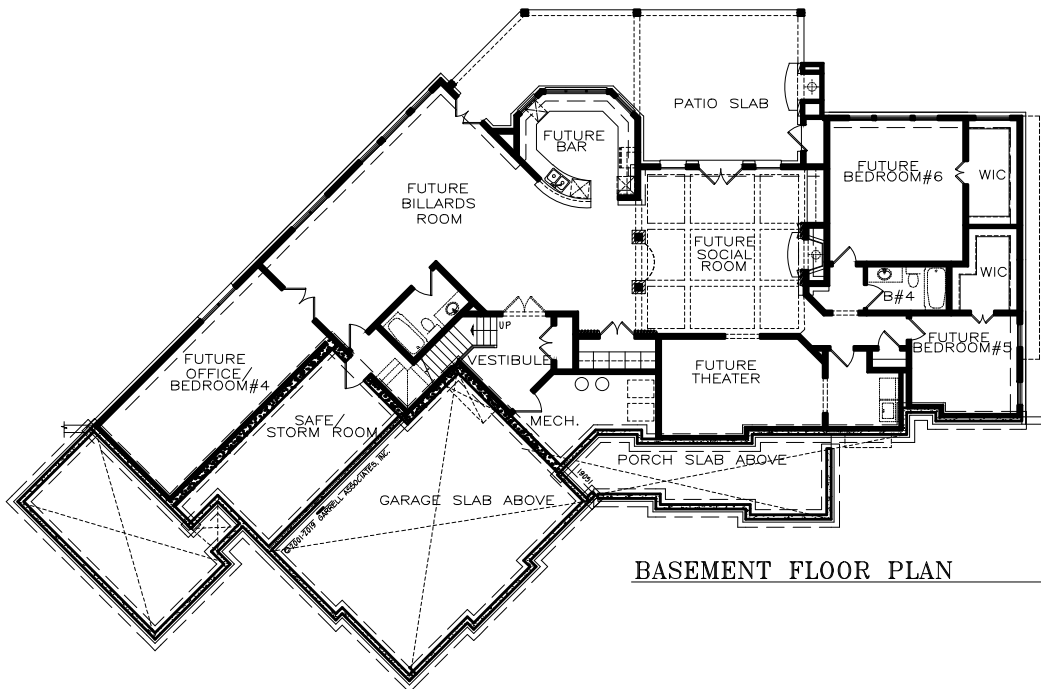
© 2000-2018 GARRELL ASSOCIATES, INC.

GARRELL

ASSOCIATES INC.
 5991 PARKWAY NORTH BLVD., SUITE D
 CUMMING, GA 30040
 PH.(770)-614-3239 FAX(770)-614-5948
 WWW.GARRELLASSOCIATES.COM



REAR ELEVATION



BASEMENT FLOOR PLAN

AMICALOLA COTTAGE F

PLAN #19051
 WIDTH 116'-4"
 DEPTH 79'-3" (HOUSE ONLY 71'-6")
 FOUNDATION: BASEMENT

3,377 SQ.FT.
 RIDGE HGT. 31'-4"