

# GARRELL

ASSOCIATES INC.

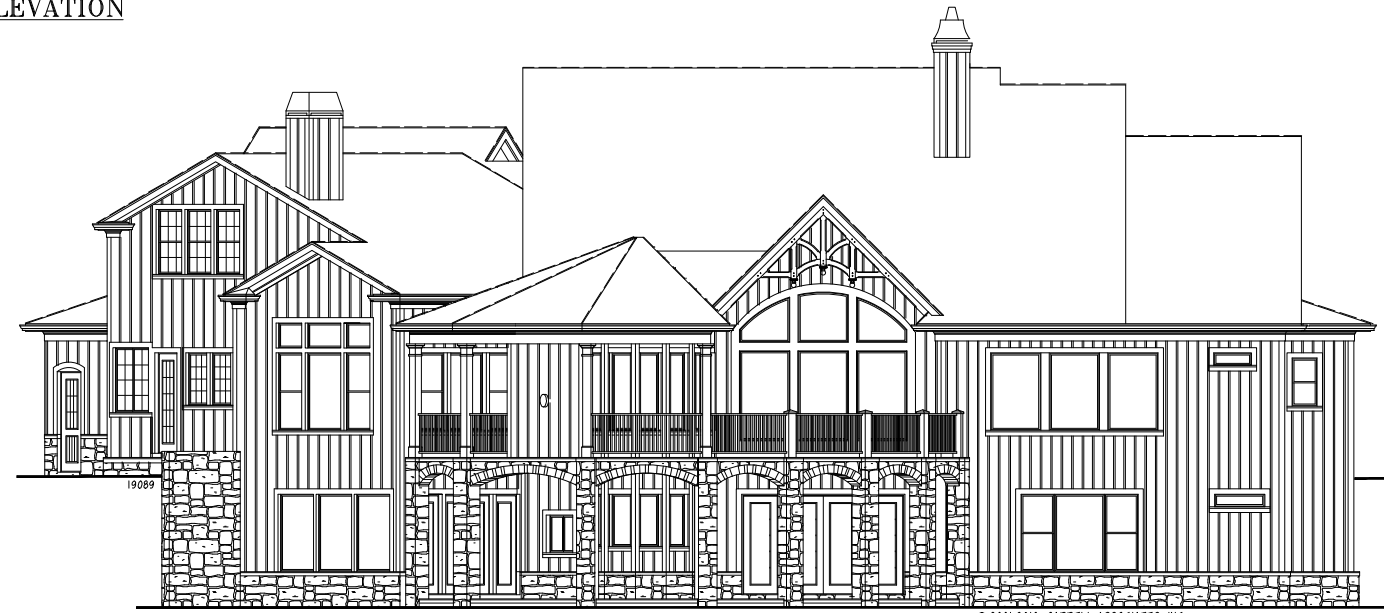
5991 PARKWAY NORTH BLVD., SUITE D  
CUMMING, GA 30040  
PH.(770)-614-3239 FAX(770)-614-5948  
WWW.GARRELLASSOCIATES.COM

19089



FRONT ELEVATION

© 2001-2019 GARRELL ASSOCIATES, INC.



REAR ELEVATION

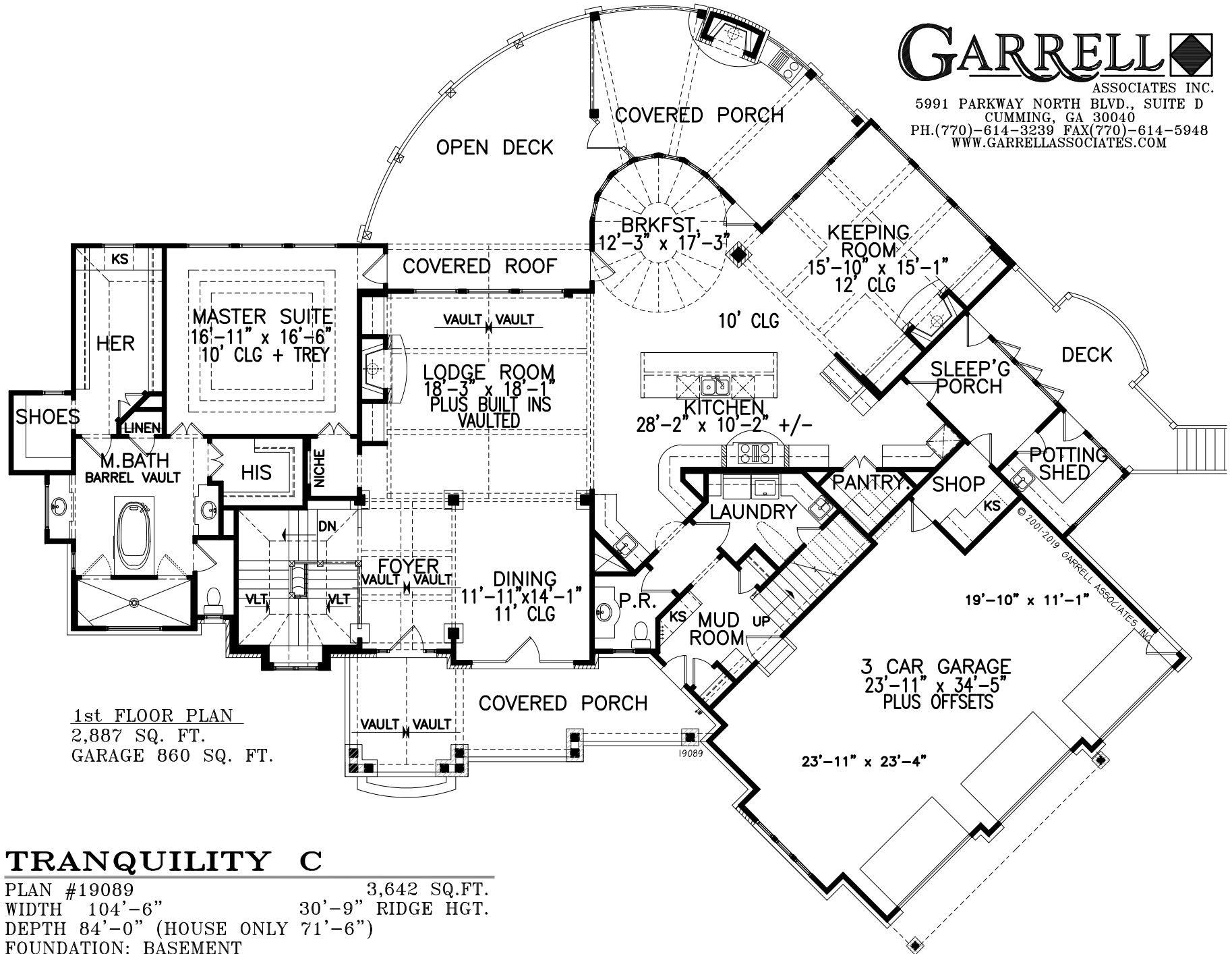
© 2001-2019 GARRELL ASSOCIATES, INC.

## TRANQUILITY C

PLAN #19089 3,642 SQ.FT.  
WIDTH 104'-6" 30'-9" RIDGE HGT.  
DEPTH 84'-0" (HOUSE ONLY 71'-6")  
FOUNDATION: BASEMENT

ARTIST'S CONCEPTION MAY VARY FROM ACTUAL PLAN

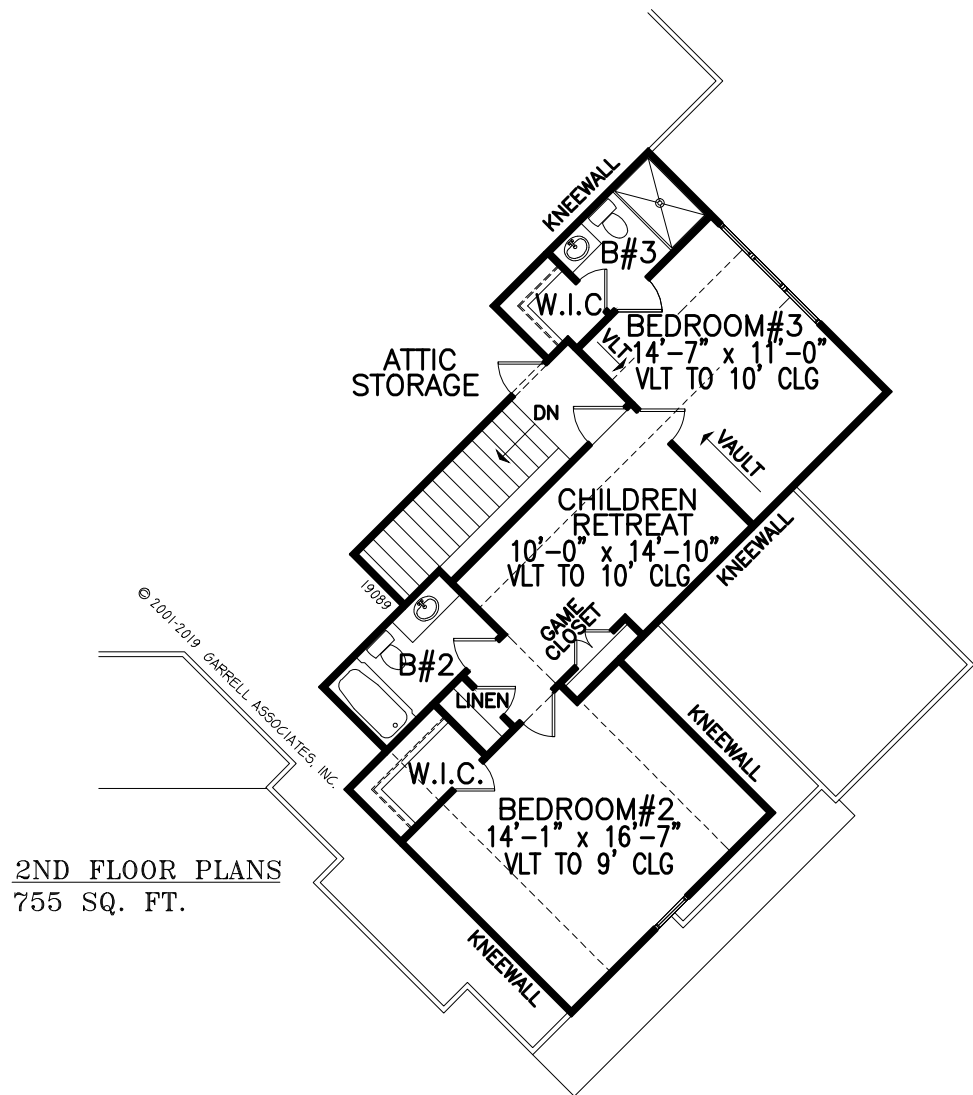
© 2001-2019 GARRELL ASSOCIATES, INC.



## TRANQUILITY C

PLAN #19089 3,642 SQ.FT.  
 WIDTH 104'-6" 30'-9" RIDGE HGT.  
 DEPTH 84'-0" (HOUSE ONLY 71'-6")  
 FOUNDATION: BASEMENT

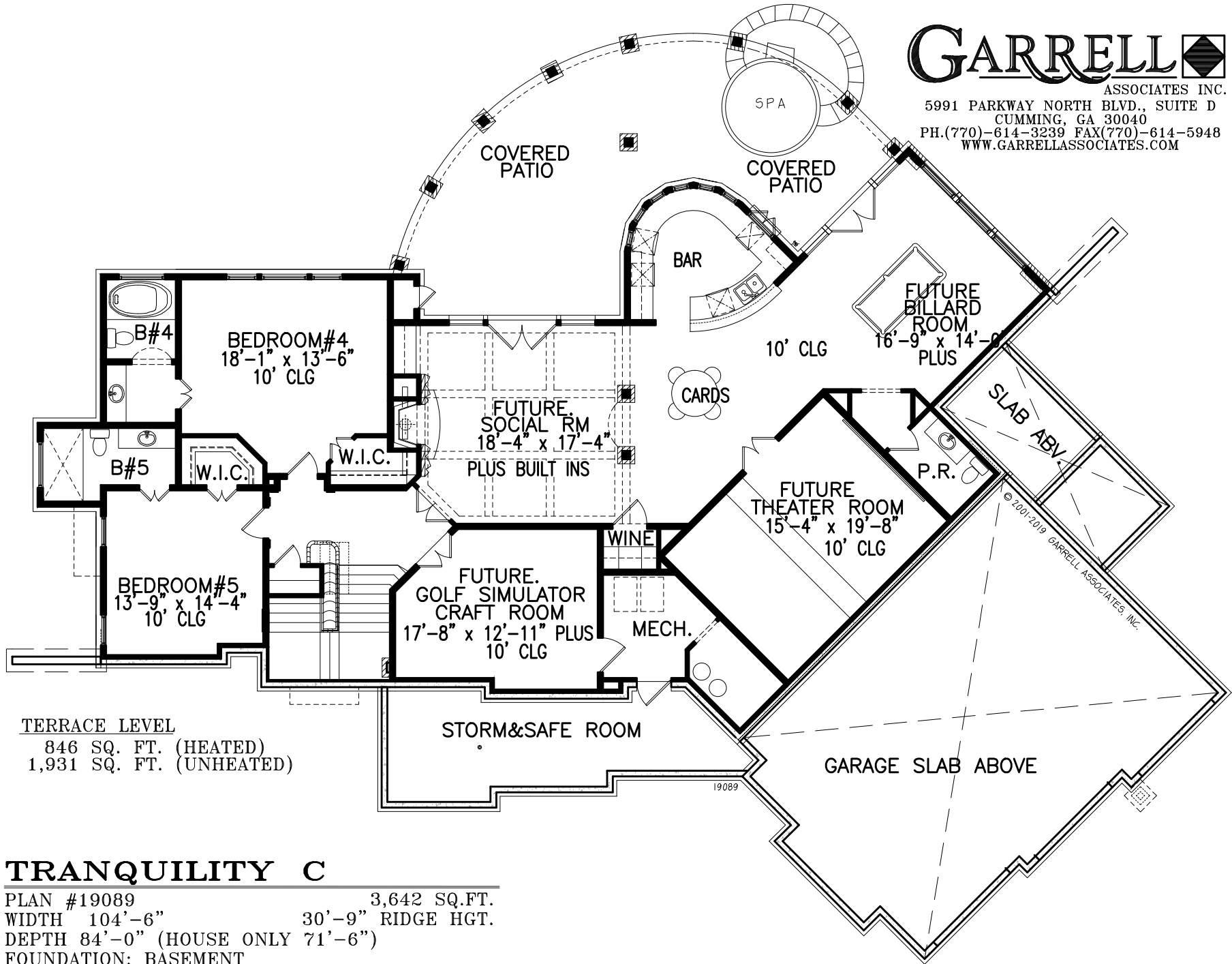
ARTIST'S CONCEPTION MAY VARY FROM ACTUAL PLAN



## TRANQUILITY C

PLAN #19089 3,642 SQ.FT.  
 WIDTH 104'-6" 30'-9" RIDGE HGT.  
 DEPTH 84'-0" (HOUSE ONLY 71'-6")  
 FOUNDATION: BASEMENT

ARTIST'S CONCEPTION MAY VARY FROM ACTUAL PLAN



**TERRACE LEVEL**

846 SQ. FT. (HEATED)  
 1,931 SQ. FT. (UNHEATED)

## TRANQUILITY C

PLAN #19089 3,642 SQ.FT.  
 WIDTH 104'-6" 30'-9" RIDGE HGT.  
 DEPTH 84'-0" (HOUSE ONLY) 71'-6"  
 FOUNDATION: BASEMENT

ARTIST'S CONCEPTION MAY VARY FROM ACTUAL PLAN

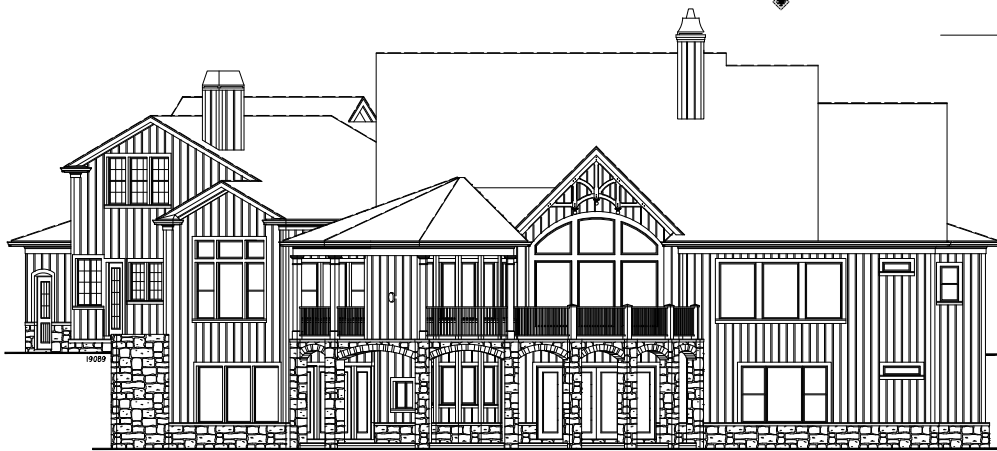
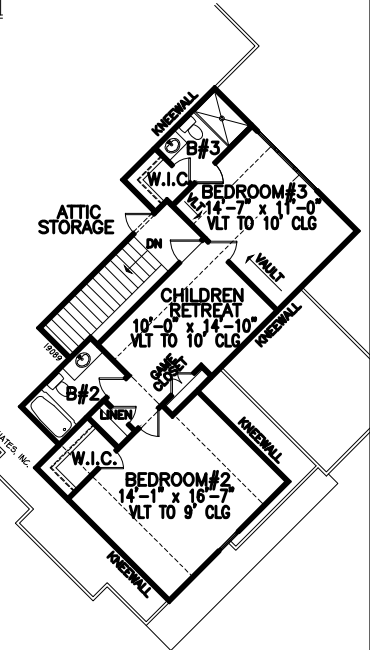
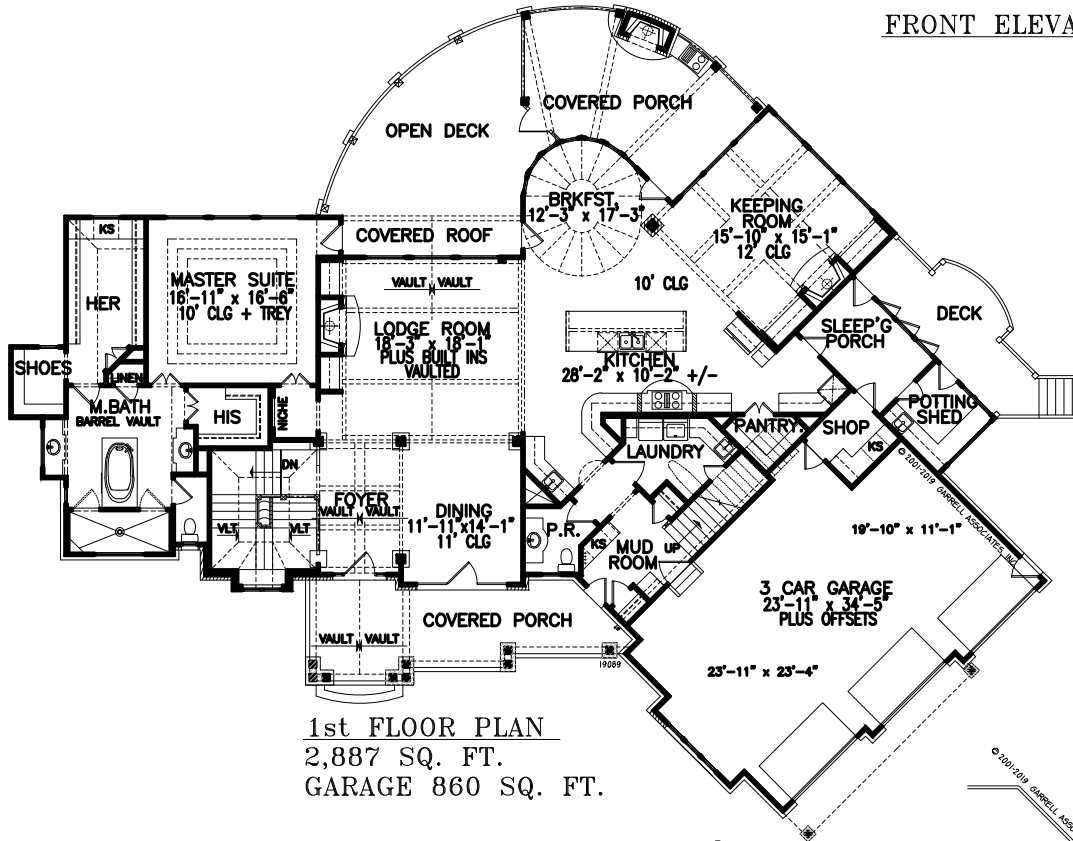
# GARRELL

ASSOCIATES INC.

5991 PARKWAY NORTH BLVD., SUITE D  
CUMMING, GA 30040  
PH.(770)-614-3239 FAX(770)-614-5948  
WWW.GARRELLASSOCIATES.COM



FRONT ELEVATION



REAR ELEVATION

## TRANQUILITY C

PLAN #19089 3,642 SQ.FT.  
WIDTH 104'-6" 30'-9" RIDGE HGT.  
DEPTH 84'-0" (HOUSE ONLY 71'-6")  
FOUNDATION: BASEMENT

ARTIST'S CONCEPTION MAY VARY FROM ACTUAL PLAN

© 2001-2019 GARRELL ASSOCIATES, INC.