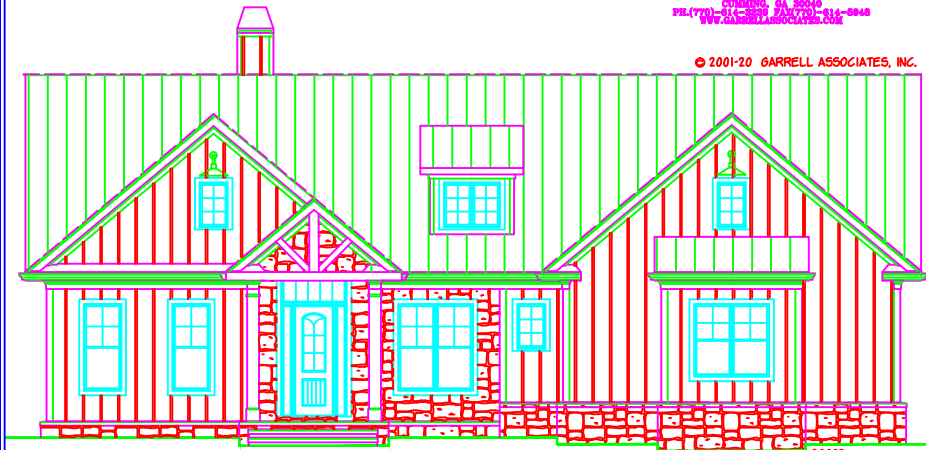


GARRELL 

ASSOCIATES INC.
6091 PARKWAY NORTH BLVD., SUITE D
CUMMING, GA 30040
TEL (770) 814-8899 FAX (770) 814-8848
WWW.GARRELLASSOCIATES.COM

© 2001-20 GARRELL ASSOCIATES, INC.



FRONT ELEVATION - A

20093

AUTUMN GLEN FARMHOUSE

PLAN #20093

WIDTH 60'-10"

DEPTH 71'-9" (HOUSE ONLY 46'-6")

FOUNDATION: BASEMENT

1,799 SQ.FT.

RIDGE HGT 24'-3"

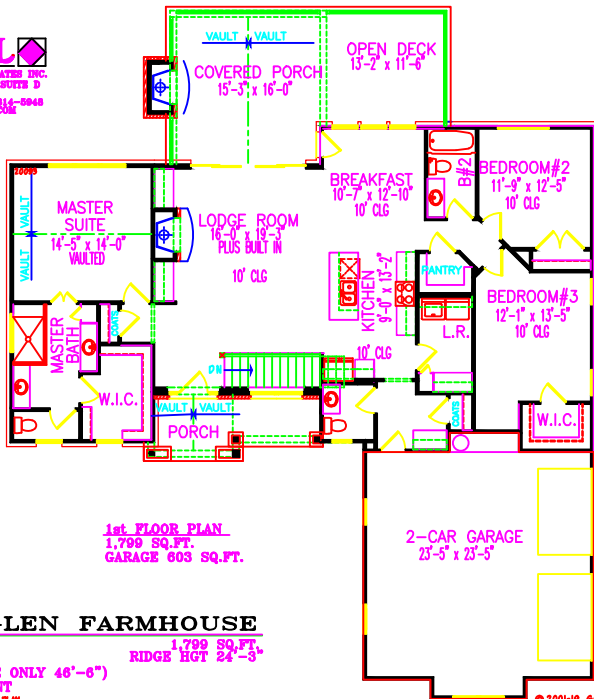
ARTIST'S CONCEPTION MAY VARY FROM ACTUAL PLAN

© 2001-19 GARRELL ASSOCIATES, INC.

GARRELL

ASSOCIATES INC.

6001 PARKWAY NORTH BLDG., SUITE D
CUMMING, GA 30046
PH: (770) 811-3870 FAX: (770) 811-3848
WWW.GARRELLASSOCIATES.COM



1st FLOOR PLAN
1,799 SQ.FT.
GARAGE 603 SQ.FT.

AUTUMN GLEN FARMHOUSE

PLAN #20093

WIDTH 60'-10"

DEPTH 71'-9" (HOUSE ONLY 46'-6")

FOUNDATION: BASEMENT

1,799 SQ.FT.

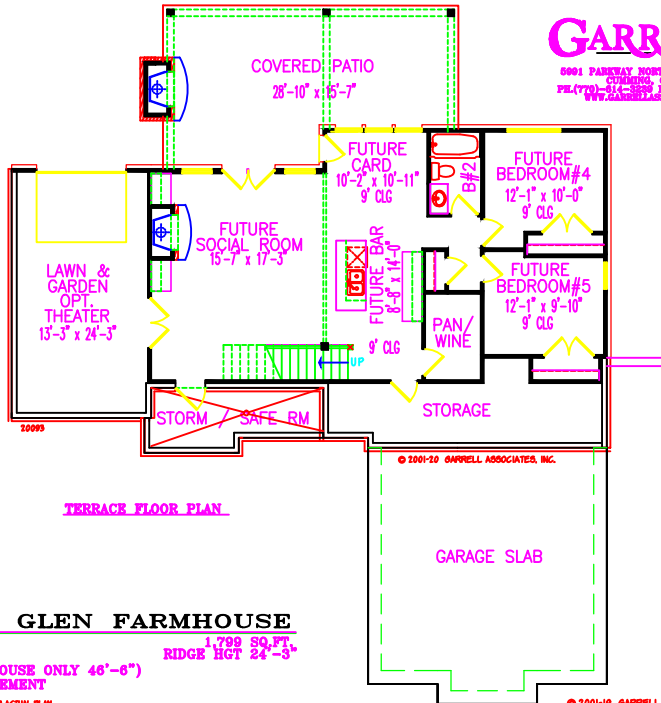
RIDGE HGT 24'-3"

ARTIST'S CONCEPTION MAY VARY FROM ACTUAL PLAN

© 2001-19 GARRELL ASSOCIATES, INC.

GARRELL

ASSOCIATES INC.
6001 PARKWAY NORTH BLVD., SUITE D
CUMMING, GA 30040
PH: (770) 514-1859 FAX: (770) 514-5048
WWW.GARRELLASSOCIATES.COM

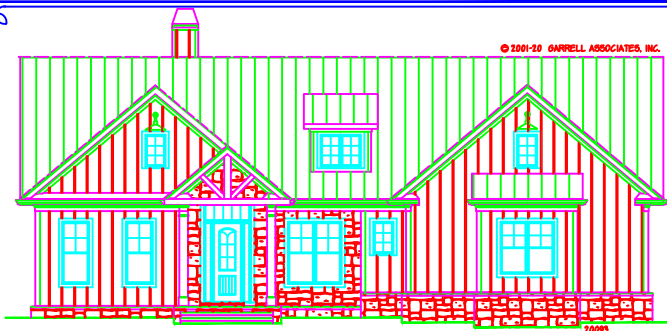


AUTUMN GLEN FARMHOUSE

PLAN #20093
WIDTH 60'-10" 1,799 SQ. FT.
DEPTH 71'-9" (HOUSE ONLY 46'-6") RIDGE HGT 24'-3"
FOUNDATION: BASEMENT

ARTIST'S CONCEPTION MAY VARY FROM ACTUAL PLAN

© 2001-19 GARRELL ASSOCIATES, INC.



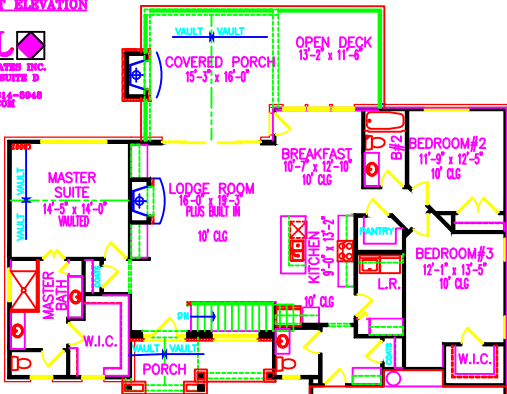
FRONT ELEVATION

20093

GARRELL

ASSOCIATES INC.

6801 PARKWAY NORTH SUITE D
CUMMING, GA 30046
PH (770)-811-3878 FAX (770)-811-8048
WWW.GARRELLASSOCIATES.COM



1st FLOOR PLAN
1,799 SQ.FT.
GARAGE 603 SQ.FT.

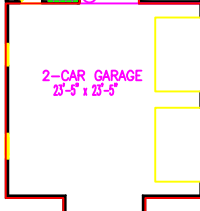
AUTUMN GLEN FARMHOUSE

PLAN #20093

WIDTH 60'-10"

DEPTH 71'-9" (HOUSE ONLY 46'-8")

FOUNDATION: BASEMENT

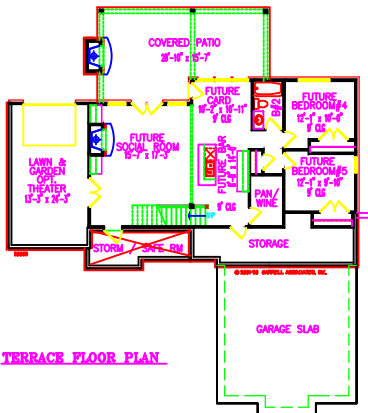
1,799 SQ.FT.
RIDGE HGT 24'-3"



GARRELL

ASSOCIATES INC.

5001 PARKWAY NORTH BLDG., SUITE D
CUMMING, GA 30046
PH. (770)-814-3339 FAX (770)-814-9648
WWW.GARRELLASSOCIATES.COM



TERRACE FLOOR PLAN

AUTUMN GLEN FARMHOUSE

PLAN #20093

WIDTH 60'-10"

DEPTH 71'-9" (HOUSE ONLY 46'-6")

FOUNDATION: BASEMENT

1,799 SQ. FT.
RIDGE HGT 24'-3"

ARTIST'S CONCEPTION MAY VARY FROM ACTUAL PLAN

© 2001-16 GARRELL ASSOCIATES, INC.