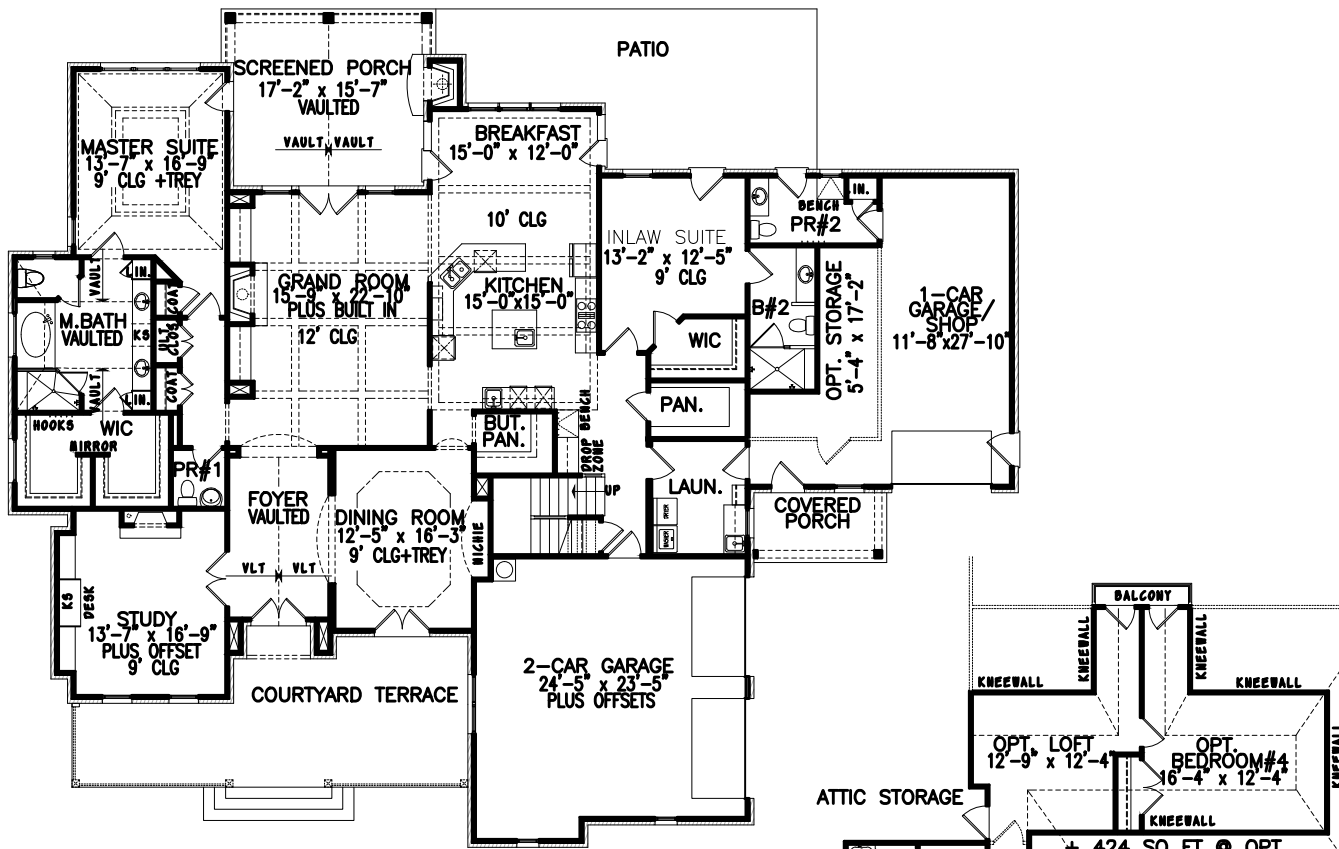


GARRELL

ASSOCIATES INC.
 5991 PARKWAY NORTH BLVD., SUITE D
 CUMMING, GA 30040
 PH.(770)-614-3239 FAX(770)-614-5948
 WWW.GARRELLASSOCIATES.COM



CHATEAU LE TERITRE

PLAN 18100 3,567 SQ.FT.
 WIDTH 91'-2" 30'-8" RIDGE HGT.
 DEPTH 75'-8" (70'-10" HOUSE)
 FOUNDATION: SLAB
 OTHER FOUNDATIONS CAN BE CREATED CALL FOR PRICING

ARTIST'S CONCEPTION MAY VARY FROM ACTUAL PLAN

©2000-2012, GARRELL ASSOCIATES, INC.