

FRONT ELEVATION

GARRELL 

ASSOCIATES INC.
 5991 PARKWAY NORTH BLVD., SUITE D
 CUMMING, GA 30040
 PH.(770)-614-3239 FAX(770)-614-5948
 WWW.GARRELLASSOCIATES.COM



REAR ELEVATION

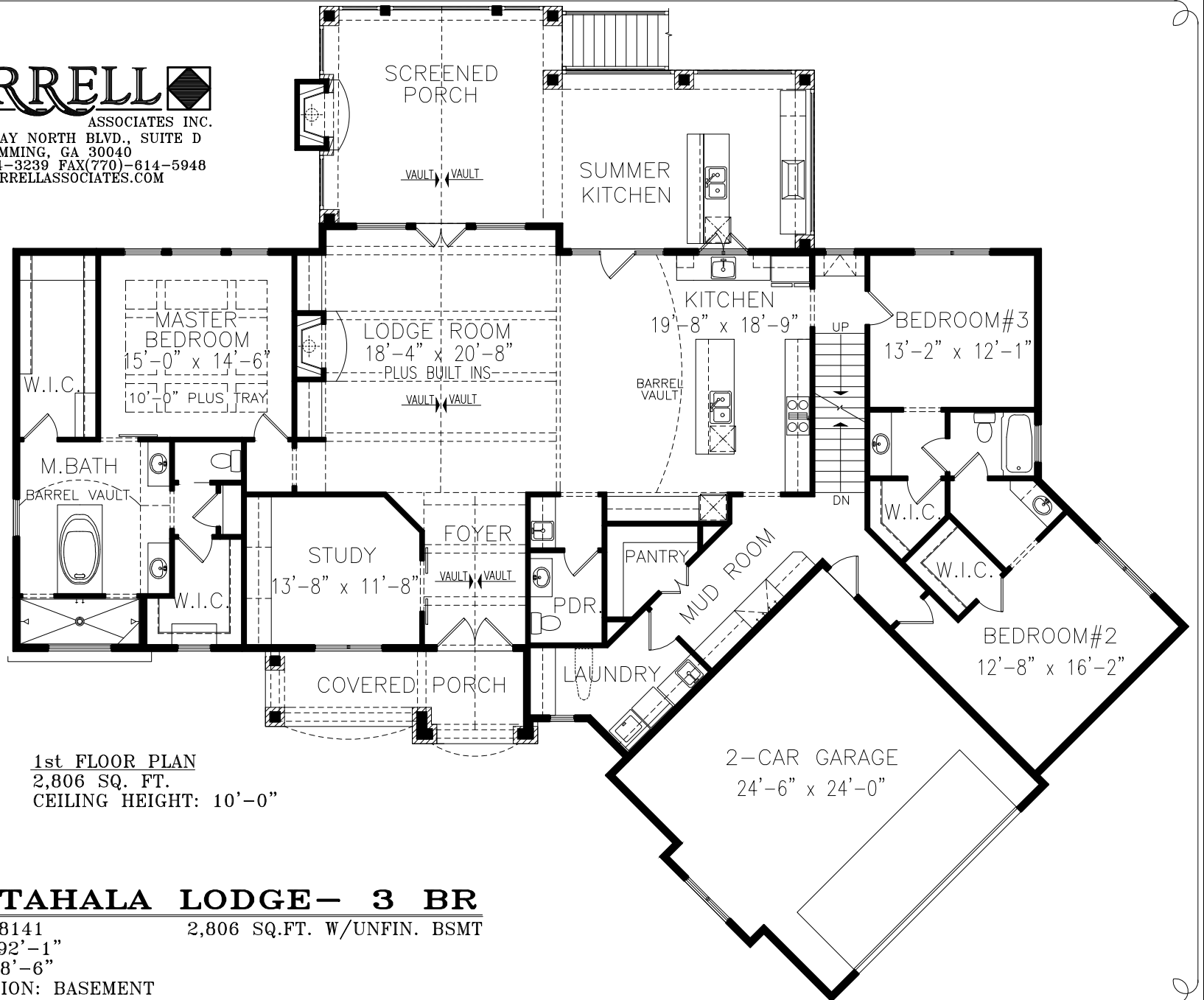
NANTAHALA LODGE - 3 BR

PLAN #18141 2,806 SQ.FT. W/UNFIN. BSMT
 WIDTH 92'-1"
 DEPTH 78'-6"
 FOUNDATION: BASEMENT

GARRELL

ASSOCIATES INC.

5991 PARKWAY NORTH BLVD., SUITE D
CUMMING, GA 30040
PH.(770)-614-3239 FAX(770)-614-5948
WWW.GARRELLASSOCIATES.COM



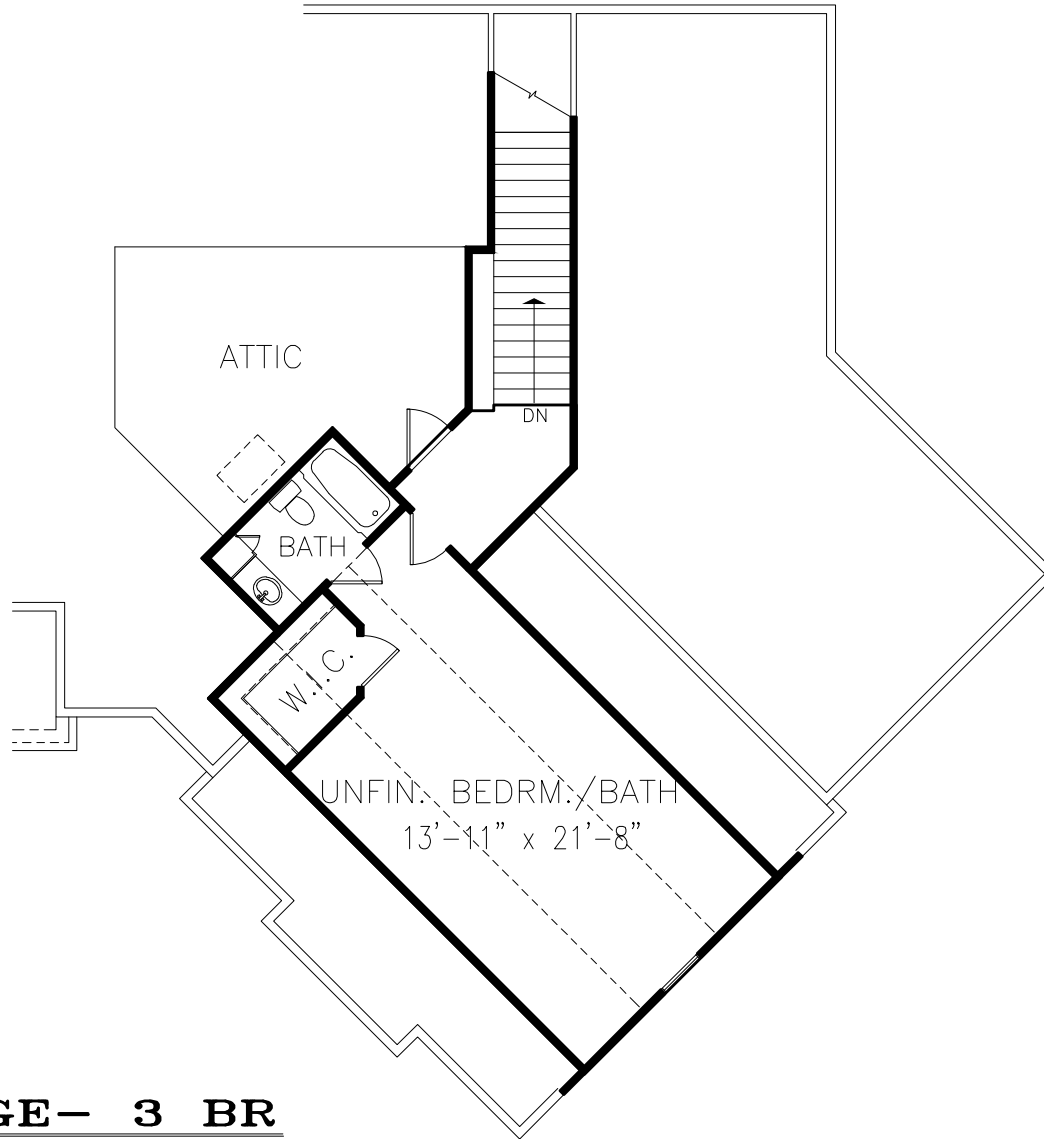
1st FLOOR PLAN
2,806 SQ. FT.
CEILING HEIGHT: 10'-0"

NANTAHALA LODGE - 3 BR

PLAN #18141 2,806 SQ.FT. W/UNFIN. BSMT
WIDTH 92'-1"
DEPTH 78'-6"
FOUNDATION: BASEMENT



5991 PARKWAY NORTH BLVD., SUITE D
CUMMING, GA 30040
PH.(770)-614-3239 FAX(770)-614-5948
WWW.GARRELLASSOCIATES.COM



OPT. 2nd FLOOR PLAN
503 SQ. FT.
CEILING HEIGHT: 9'-0"

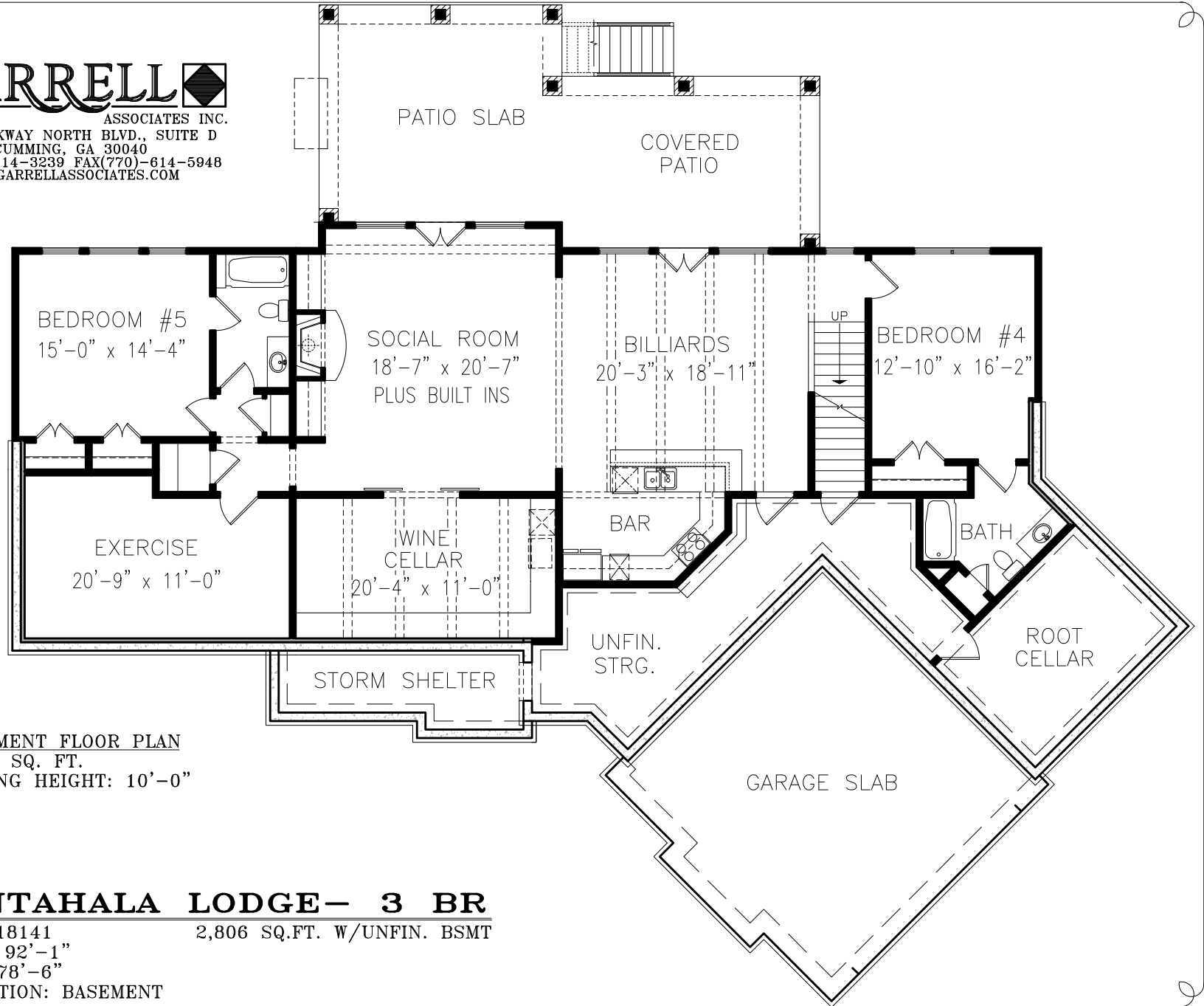
NANTAHALA LODGE— 3 BR

PLAN #18141 2,806 SQ.FT. W/UNFIN. BSMT
WIDTH 92'-1"
DEPTH 78'-6"
FOUNDATION: BASEMENT

GARRELL

ASSOCIATES INC.

5991 PARKWAY NORTH BLVD., SUITE D
CUMMING, GA 30040
PH.(770)-614-3239 FAX(770)-614-5948
WWW.GARRELLASSOCIATES.COM



BASEMENT FLOOR PLAN
2,165 SQ. FT.
CEILING HEIGHT: 10'-0"

NANTAHALA LODGE - 3 BR

PLAN #18141 2,806 SQ.FT. W/UNFIN. BSMT
WIDTH 92'-1"
DEPTH 78'-6"
FOUNDATION: BASEMENT