



## AMICALOLA GARAGE

PLAN # 12032                      2,045 SQ. FT.

WIDTH 38' 0"

DEPTH 32' 6"

FOUNDATION: SLAB

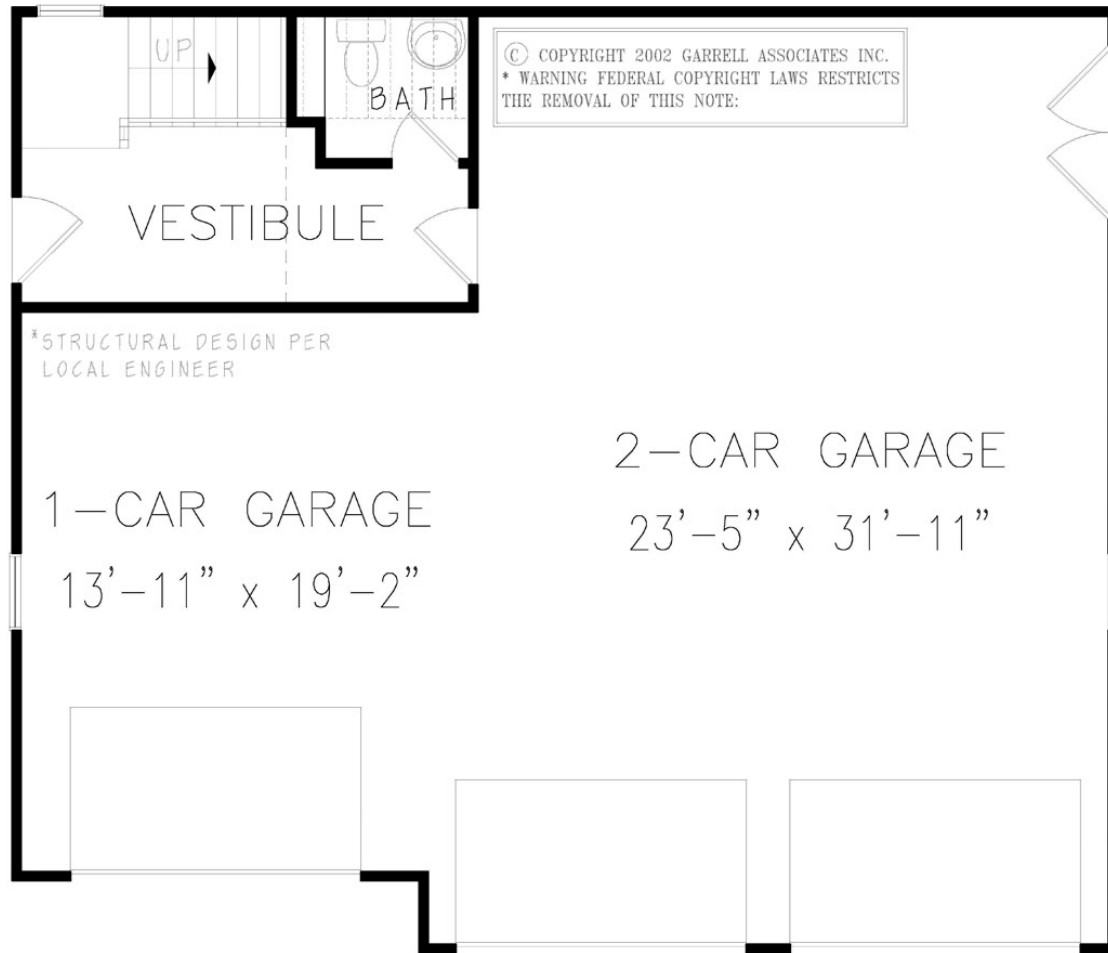
ARTIST'S CONCEPTION MAY VARY FROM ACTUAL PLAN

Copyright 2012, Garrell Associates, Inc.

# GARRELL

ASSOCIATES INC.

5991 PARKWAY NORTH BLVD., SUITE D  
CUMMING, GA 30040  
PH.(770)-814-3239 FAX(770)-814-5948  
[WWW.GARRELLASSOCIATES.COM](http://WWW.GARRELLASSOCIATES.COM)




**FIRST FLOOR PLAN**  
167 SQ. FT.

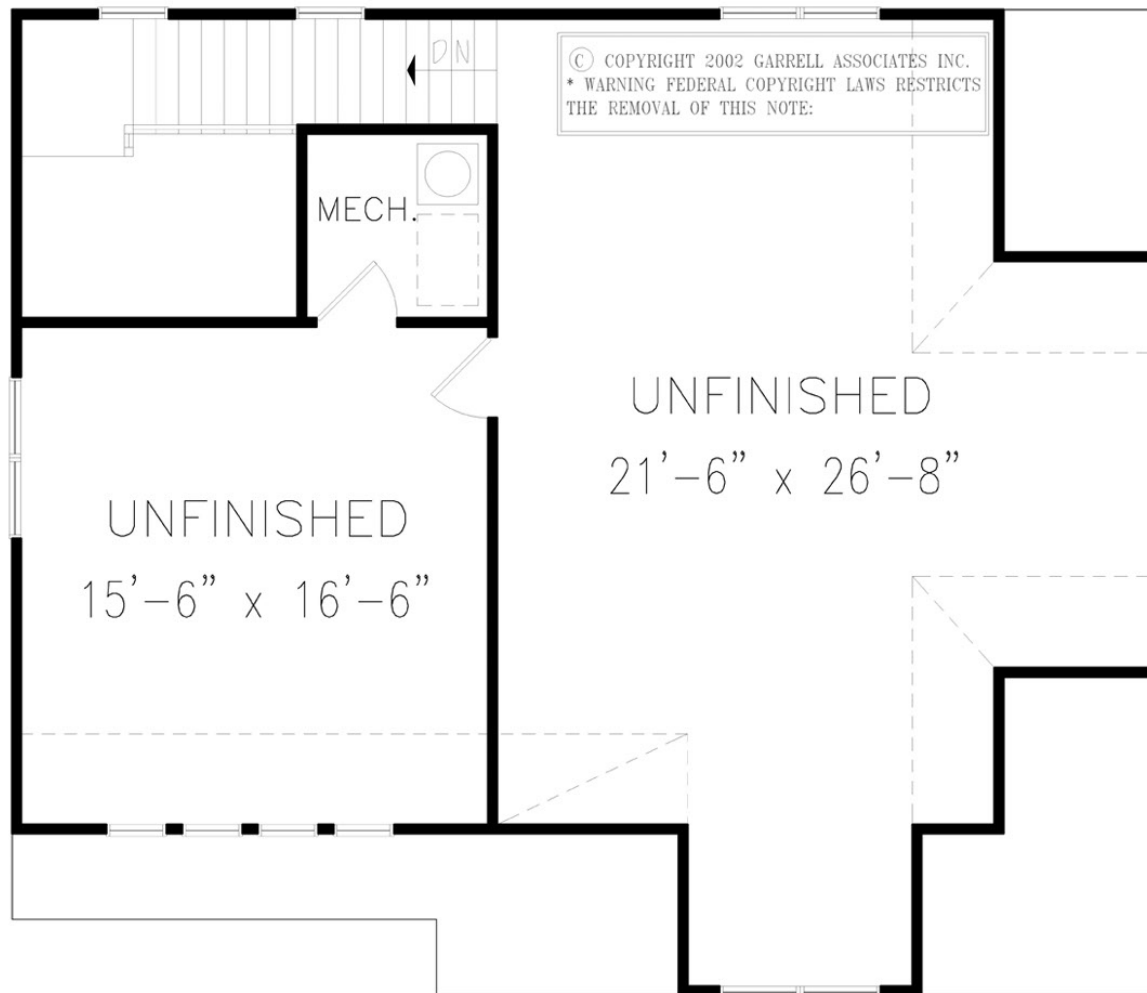
**AMICALOLA GARAGE**

PLAN # 12032                      2,045 SQ. FT.  
 WIDTH 38' 0"  
 DEPTH 32' 6"  
 FOUNDATION: SLAB

ARTIST'S CONCEPTION MAY VARY FROM ACTUAL PLAN

Copyright 2012, Garrell Associates, Inc.

**GARRELL**   
 ASSOCIATES INC.  
 5991 PARKWAY NORTH BLVD., SUITE D  
 CUMMING, GA 30040  
 PH.(770)-814-3239 FAX(770)-814-5948  
 WWW.GARRELLASSOCIATES.COM



© COPYRIGHT 2002 GARRELL ASSOCIATES INC.  
 \* WARNING FEDERAL COPYRIGHT LAWS RESTRICTS  
 THE REMOVAL OF THIS NOTE:


**SECOND FLOOR PLAN**  
 845 SQ. FT.

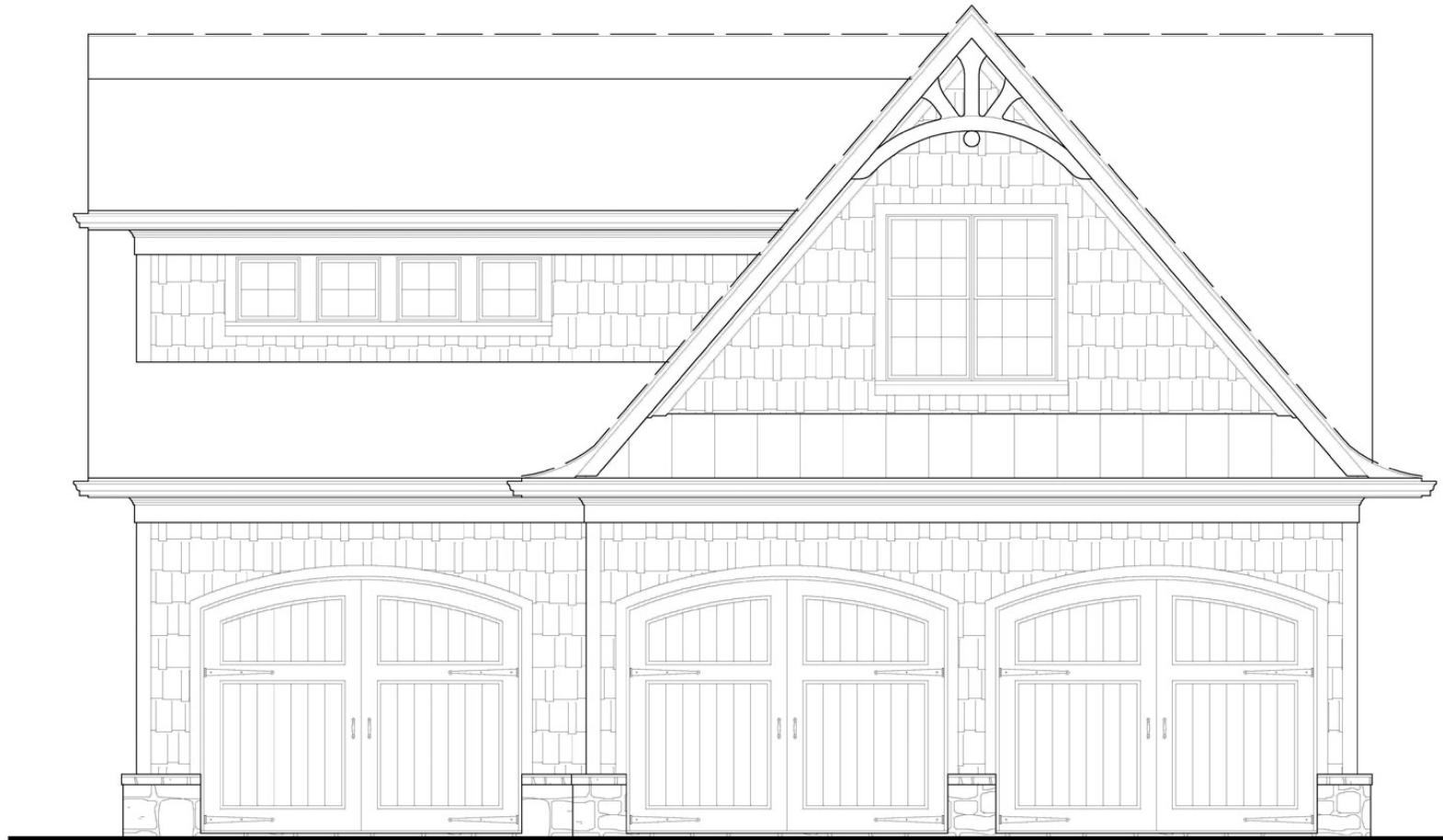
**AMICALOLA GARAGE**

PLAN # 12032                      2,045 SQ. FT.  
 WIDTH 38' 0"  
 DEPTH 32' 6"  
 FOUNDATION: SLAB

ARTIST'S CONCEPTION MAY VARY FROM ACTUAL PLAN

Copyright 2012, Garrell Associates, Inc.

**GARRELL**   
 ASSOCIATES INC.  
 5991 PARKWAY NORTH BLVD., SUITE D  
 CUMMING, GA 30040  
 PH.(770)-814-3239 FAX(770)-814-5948  
 WWW.GARRELLASSOCIATES.COM



## AMICALOLA GARAGE

PLAN # 12032                      2,045 SQ. FT.

WIDTH 38' 0"

DEPTH 32' 6"

FOUNDATION: SLAB

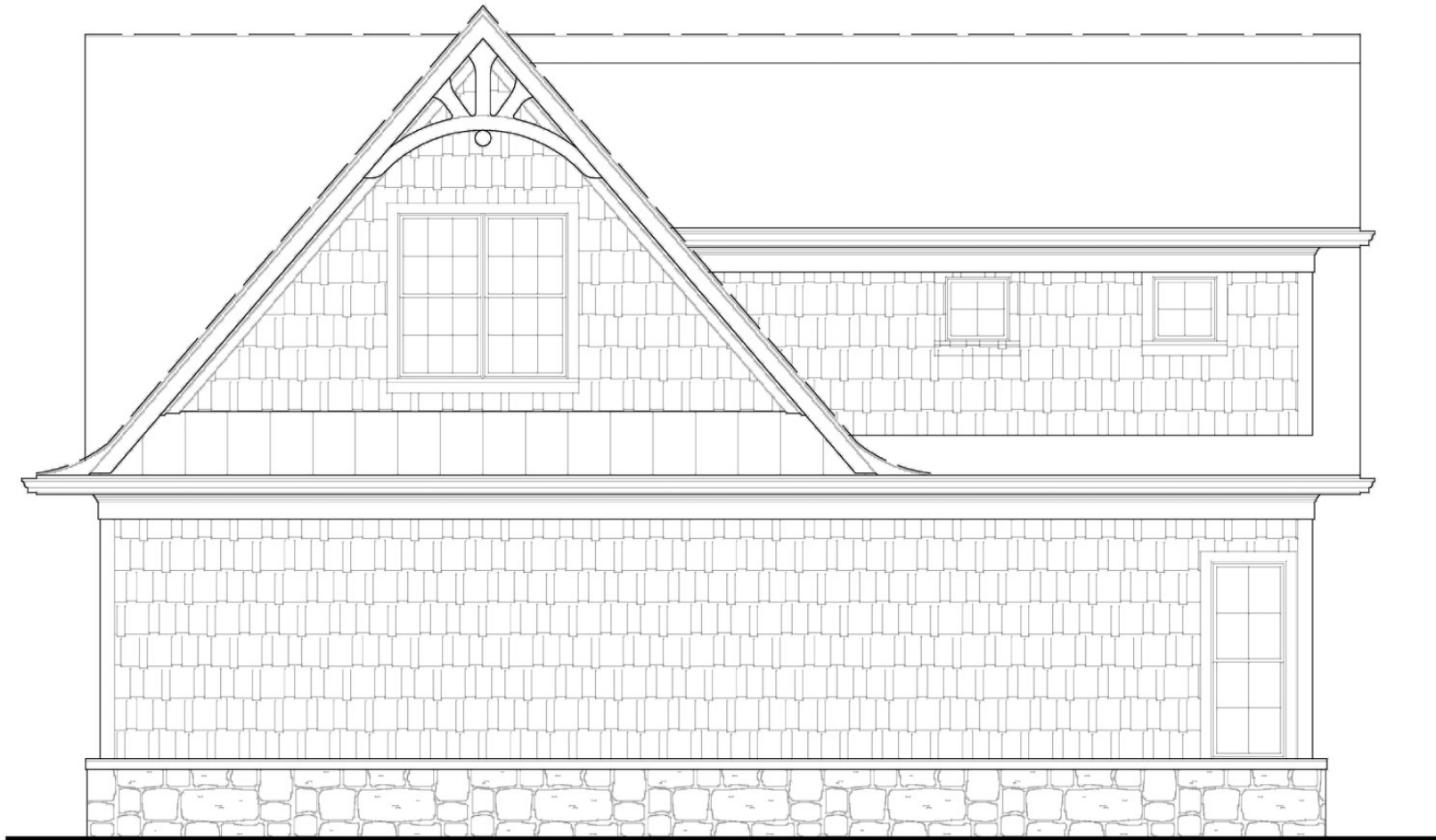
ARTIST'S CONCEPTION MAY VARY FROM ACTUAL PLAN

Copyright 2012, Garrell Associates, Inc.

**GARRELL** 

ASSOCIATES INC.

5991 PARKWAY NORTH BLVD., SUITE D  
CUMMING, GA 30040  
PH.(770)-814-3239 FAX(770)-814-5948  
[WWW.GARRELLASSOCIATES.COM](http://WWW.GARRELLASSOCIATES.COM)



REAR ELEVATION

**AMICALOLA GARAGE**

PLAN # 12032                      2,045 SQ. FT.

WIDTH 38' 0"

DEPTH 32' 6"

FOUNDATION: SLAB

ARTIST'S CONCEPTION MAY VARY FROM ACTUAL PLAN

Copyright 2012, Garrell Associates, Inc.

**GARRELL** 

ASSOCIATES INC.

5991 PARKWAY NORTH BLVD., SUITE D  
CUMMING, GA 30040

PH.(770)-814-3239 FAX(770)-814-5948

[WWW.GARRELLASSOCIATES.COM](http://WWW.GARRELLASSOCIATES.COM)