



HARBORMONT HALL

PLAN # 01046 5,020 SO. FT.

WIDTH 76' 0"

DEPTH 52' 6"

FOUNDATION: BASEMENT

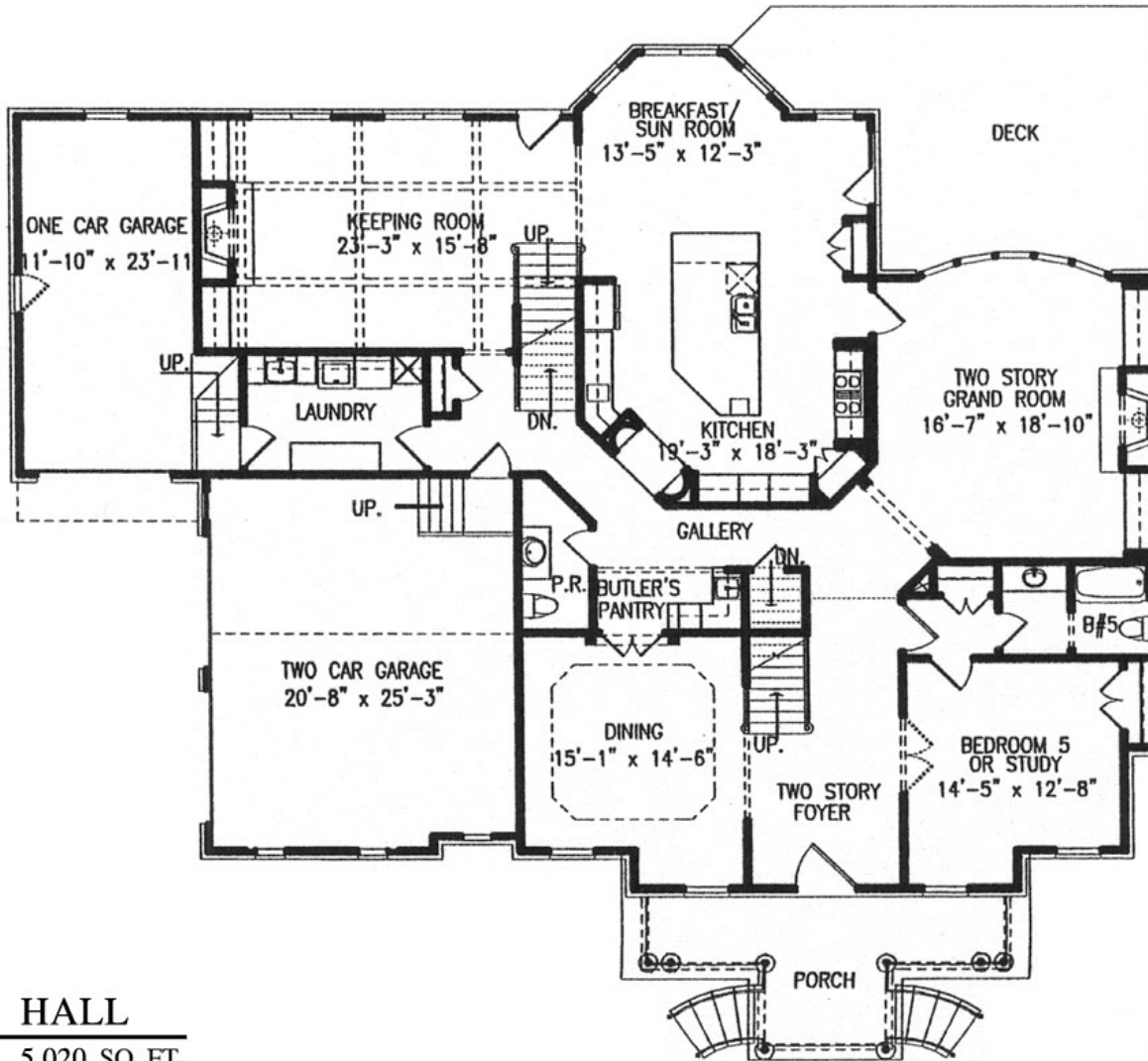
ARTIST'S CONCEPTION MAY VARY FROM ACTUAL PLAN

Copyright 2001, Garrell Associates, Inc.

GARRELL 

ASSOCIATES INC.

5991 PARKWAY NORTH BLVD., SUITE D
CUMMING, GA 30040
PH.(770)-614-3239 FAX(770)-614-5948
WWW.GARRELLASSOCIATES.COM



FIRST FLOOR PLAN
 2,533 SQ. FT.
 GARAGE 845 SQ. FT.

HARBORMONT HALL

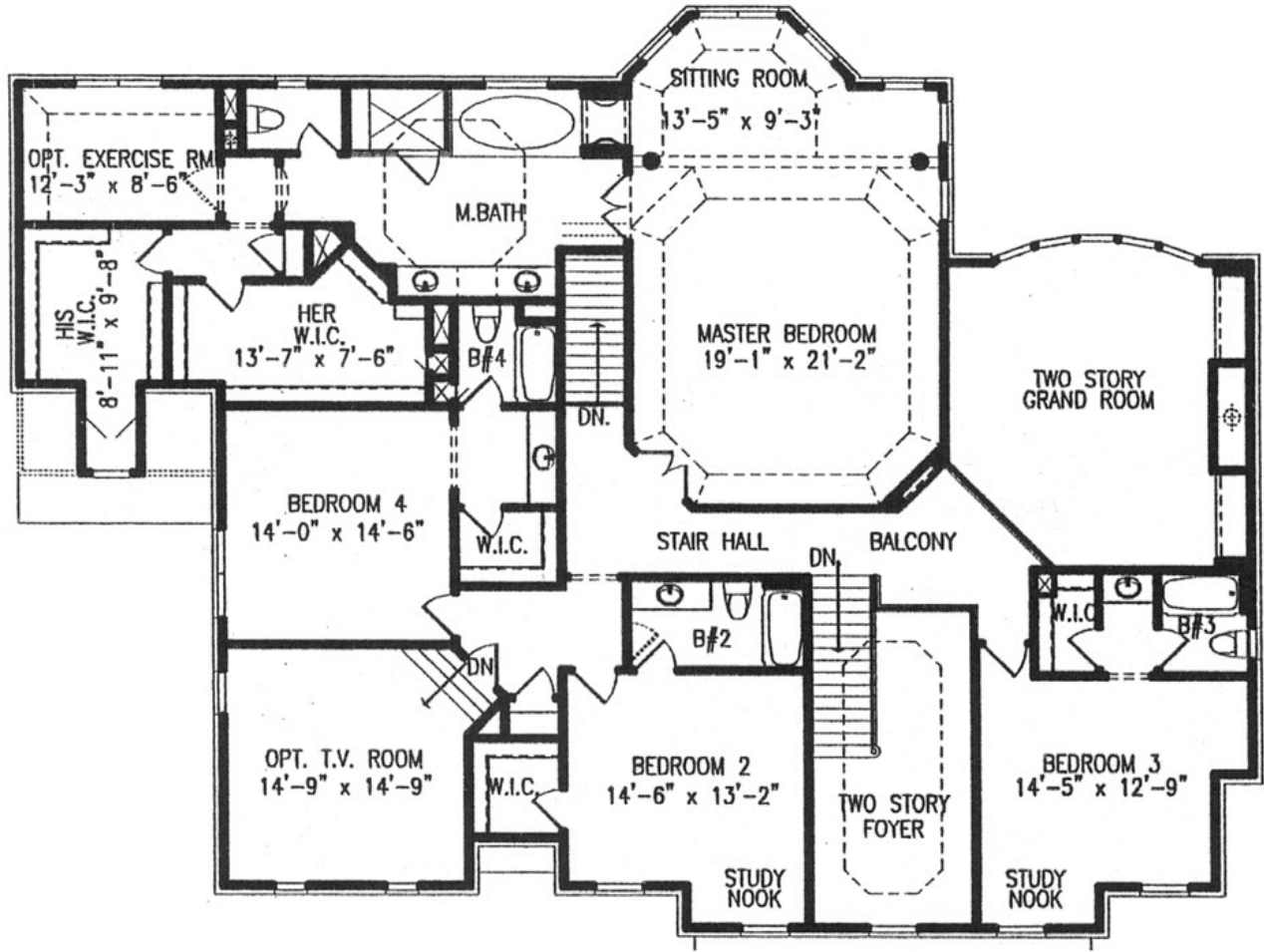
PLAN # 01046 5,020 SQ. FT.
 WIDTH 76' 0"
 DEPTH 52' 6"
 FOUNDATION: BASEMENT

ARTIST'S CONCEPTION MAY VARY FROM ACTUAL PLAN

Copyright 2001, Garrell Associates, Inc.

GARRELL 

ASSOCIATES INC.
 5991 PARKWAY NORTH BLVD., SUITE D
 CUMMING, GA 30040
 PH.(770)-814-3239 FAX(770)-814-5948
 WWW.GARRELLASSOCIATES.COM



SECOND FLOOR PLAN
 2,487 SQ. FT.

HARBORMONT HALL

PLAN # 01046 5,020 SQ. FT.
 WIDTH 76' 0"
 DEPTH 52' 6"
 FOUNDATION: BASEMENT

ARTIST'S CONCEPTION MAY VARY FROM ACTUAL PLAN

Copyright 2001, Garrell Associates, Inc.

GARRELL

ASSOCIATES INC.
 5991 PARKWAY NORTH BLVD., SUITE D
 CUMMING, GA 30040
 PH.(770)-614-3239 FAX(770)-614-5948
 WWW.GARRELLASSOCIATES.COM