



## KETCHIKAN LODGE

PLAN # 06427 4,888 SQ. FT.

WIDTH 115' 3"

DEPTH 92' 2"

FOUNDATION: BASEMENT

ARTIST'S CONCEPTION MAY VARY FROM ACTUAL PLAN

Copyright 2007, Garrell Associates, Inc.

**GARRELL**   
ASSOCIATES INC.  
5991 PARKWAY NORTH BLVD., SUITE D  
CUMMING, GA 30040  
PH.(770)-814-3239 FAX(770)-814-5948  
[WWW.GARRELLASSOCIATES.COM](http://WWW.GARRELLASSOCIATES.COM)



## KETCHIKAN LODGE

PLAN # 06427 4,888 SQ. FT.

WIDTH 115' 3"

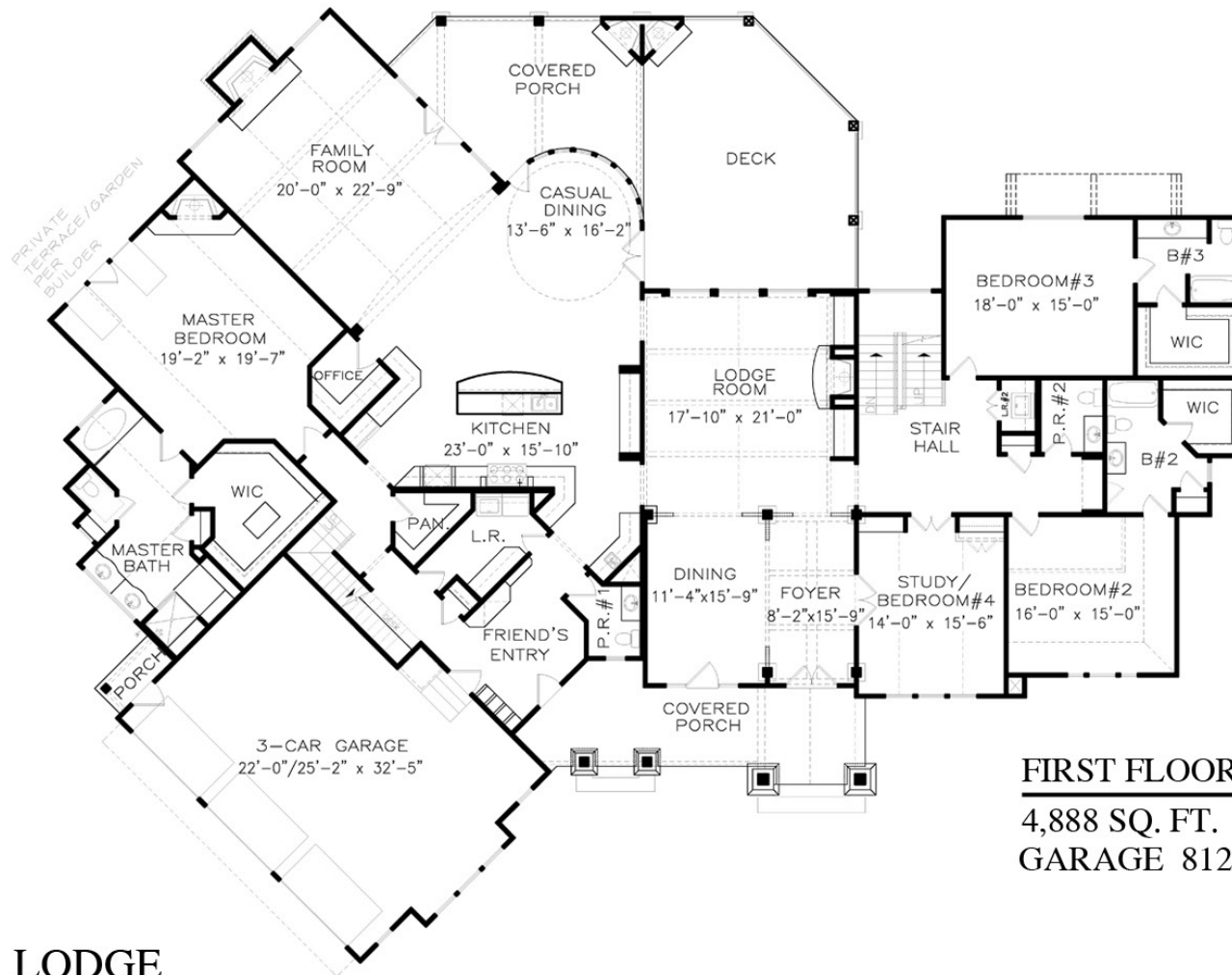
DEPTH 92' 2"

FOUNDATION: BASEMENT

ARTIST'S CONCEPTION MAY VARY FROM ACTUAL PLAN

Copyright 2007, Garrell Associates, Inc.

**GARRELL**   
ASSOCIATES INC.  
5991 PARKWAY NORTH BLVD., SUITE D  
CUMMING, GA 30040  
PH.(770)-614-3239 FAX(770)-614-5948  
WWW.GARRELLASSOCIATES.COM



**FIRST FLOOR PLAN**  
**4,888 SQ. FT.**  
**GARAGE 812 SQ. FT.**

**KETCHIKAN LODGE**

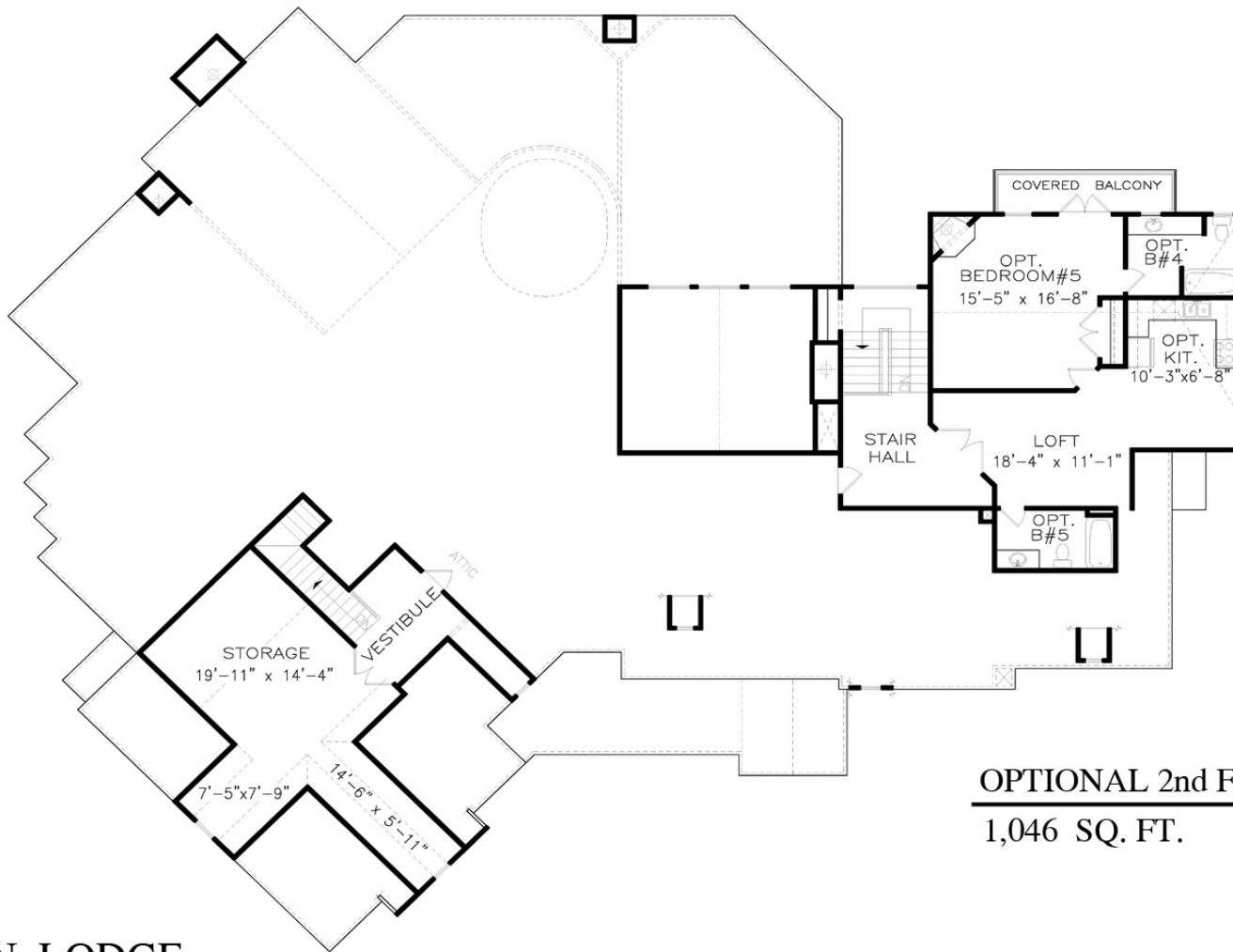
PLAN # 06427  
 WIDTH 115' 3"  
 DEPTH 92' 2"  
 FOUNDATION: BASEMENT

4,888 SQ. FT.

ARTIST'S CONCEPTION MAY VARY FROM ACTUAL PLAN

Copyright 2007, Garrell Associates, Inc.

**GARRELL** ASSOCIATES INC.  
 5991 PARKWAY NORTH BLVD., SUITE D  
 CUMMING, GA 30040  
 PH.(770)-814-3239 FAX(770)-814-5948  
 WWW.GARRELLASSOCIATES.COM



**OPTIONAL 2nd FLOOR**  
1,046 SQ. FT.

**KETCHIKAN LODGE**

PLAN # 06427 4,888 SQ. FT.  
 WIDTH 115' 3"  
 DEPTH 92' 2"  
 FOUNDATION: BASEMENT

ARTIST'S CONCEPTION MAY VARY FROM ACTUAL PLAN  
 Copyright 2007, Garrell Associates, Inc.

**GARRELL**   
 ASSOCIATES INC.  
 5991 PARKWAY NORTH BLVD., SUITE D  
 CUMMING, GA 30040  
 PH.(770)-814-3239 FAX(770)-814-5948  
 WWW.GARRELLASSOCIATES.COM



REAR ELEVATION

## KETCHIKAN LODGE

PLAN # 06427                      4,888 SQ. FT.  
WIDTH 115' 3"  
DEPTH 92' 2"  
FOUNDATION: BASEMENT

ARTIST'S CONCEPTION MAY VARY FROM ACTUAL PLAN

Copyright 2007, Garrell Associates, Inc.

**GARRELL**   
ASSOCIATES INC.  
5991 PARKWAY NORTH BLVD., SUITE D  
CUMMING, GA 30040  
PH.(770)-814-3239 FAX(770)-814-5948  
[WWW.GARRELLASSOCIATES.COM](http://WWW.GARRELLASSOCIATES.COM)