



FRONT ELEVATION

MARK HARBOR C

PLAN # 18070 2,230 SQ.FT.

WIDTH 73' 4"

DEPTH 71' 8"

FOUNDATION: BASEMENT

ARTIST'S CONCEPTION MAY VARY FROM ACTUAL PLAN

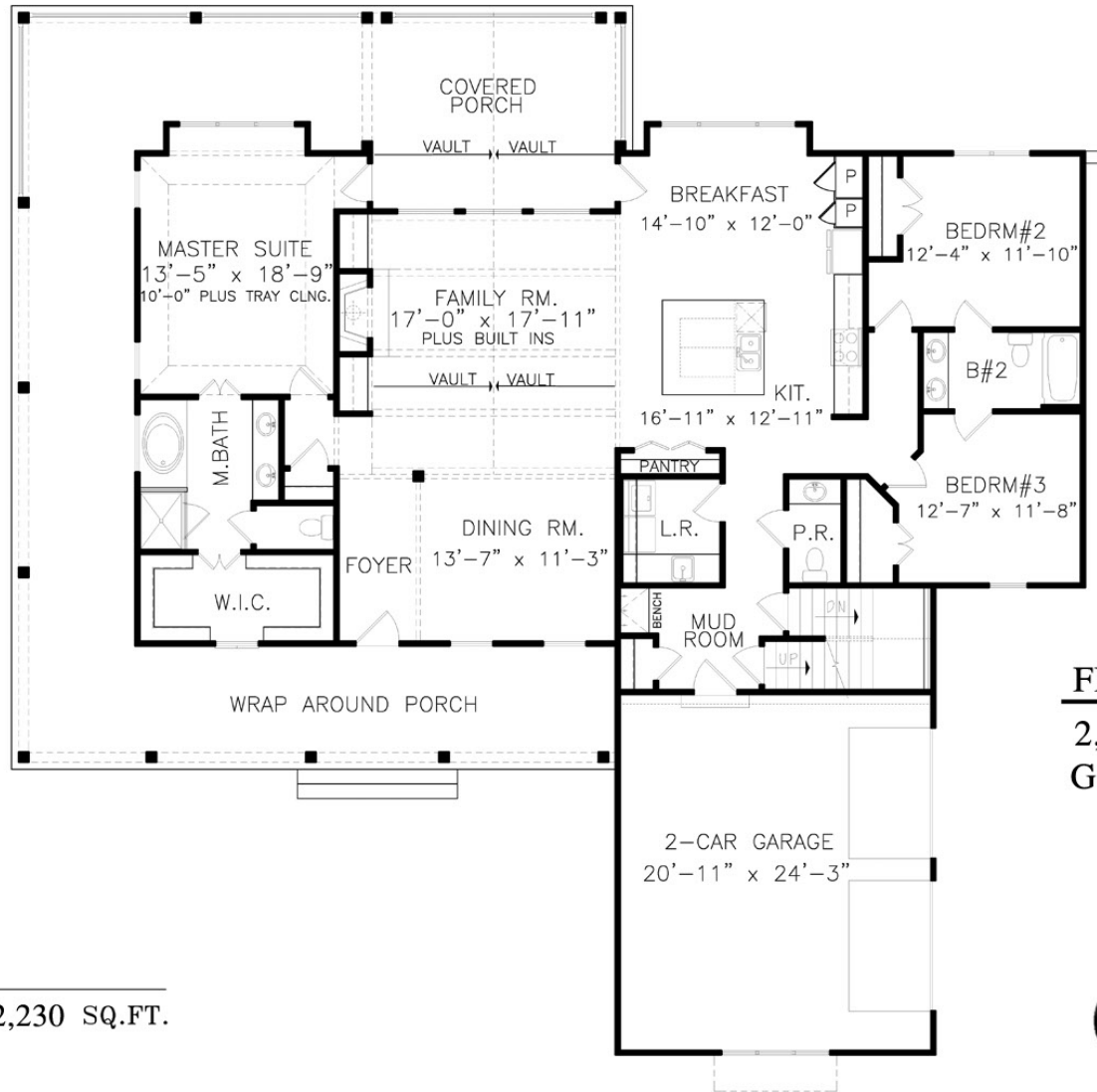
Copyright 2018, Garrell Associates, Inc.

GARRELL 

ASSOCIATES INC.

5991 PARKWAY NORTH BLVD., SUITE D
CUMMING, GA 30040

PH.(770)-814-3239 FAX(770)-814-5948
WWW.GARRELLASSOCIATES.COM



FIRST FLOOR PLAN
2,230 SQ. FT.
GARAGE 545 SQ. FT.

MARK HARBOR C

PLAN # 18070 2,230 SQ.FT.

WIDTH 73' 4"

DEPTH 71' 8"

FOUNDATION: BASEMENT

ARTIST'S CONCEPTION MAY VARY FROM ACTUAL PLAN

Copyright 2018, Garrell Associates, Inc.

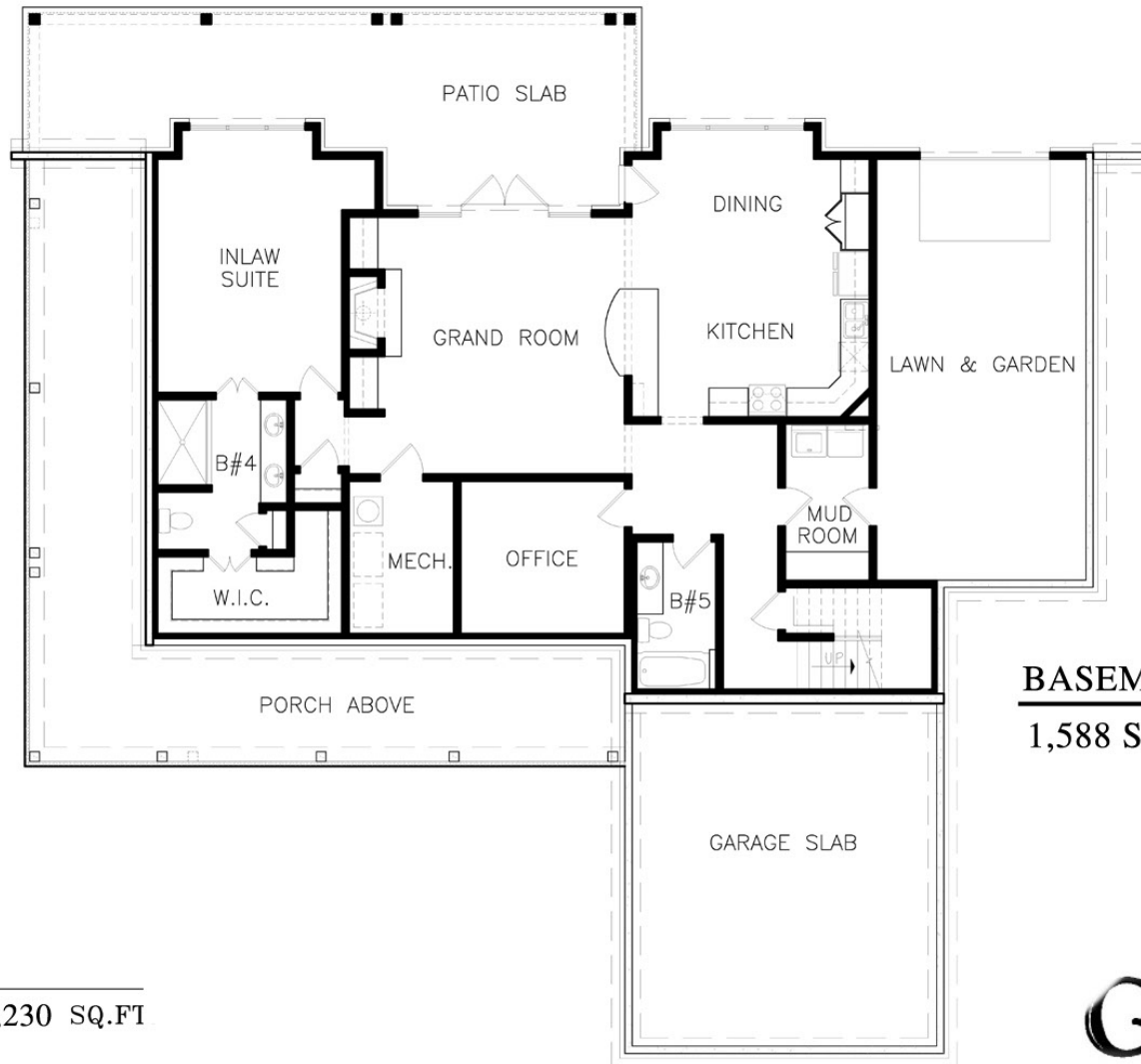
GARRELL 

ASSOCIATES INC.

5991 PARKWAY NORTH BLVD., SUITE D
 CUMMING, GA 30040

PH.(770)-814-3239 FAX(770)-814-5948

WWW.GARRELLASSOCIATES.COM



BASEMENT FLOOR PLAN
1,588 SQ. FT.

MARK HARBOR C

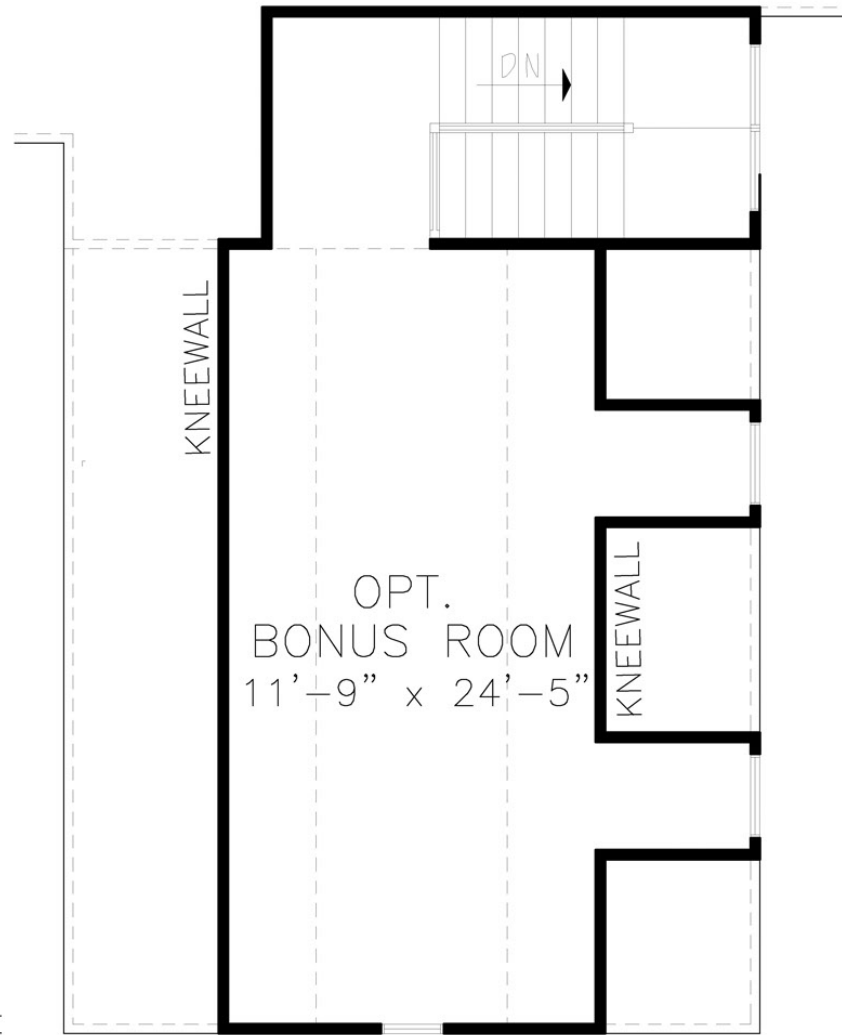
PLAN # 18070 2,230 SQ.FT
 WIDTH 73' 4"
 DEPTH 71' 8"

FOUNDATION: BASEMENT

ARTIST'S CONCEPTION MAY VARY FROM ACTUAL PLAN

Copyright 2018 , Garrell Associates, Inc.

GARRELL 
 ASSOCIATES INC.
 5991 PARKWAY NORTH BLVD., SUITE D
 CUMMING, GA 30040
 PH.(770)-814-3239 FAX(770)-814-5948
 WWW.GARRELLASSOCIATES.COM



OPTIONAL BONUS ROOM

386 SQ. FT.

MARK HARBOR C

PLAN # 18070 2,230 SQ.FT

WIDTH 73' 4"

DEPTH 71' 8"

FOUNDATION: BASEMENT

ARTIST'S CONCEPTION MAY VARY FROM ACTUAL PLAN

Copyright 2018, Garrell Associates, Inc.

GARRELL 

ASSOCIATES INC.

5991 PARKWAY NORTH BLVD., SUITE D
CUMMING, GA 30040

PH.(770)-814-3239 FAX(770)-814-5948
WWW.GARRELLASSOCIATES.COM