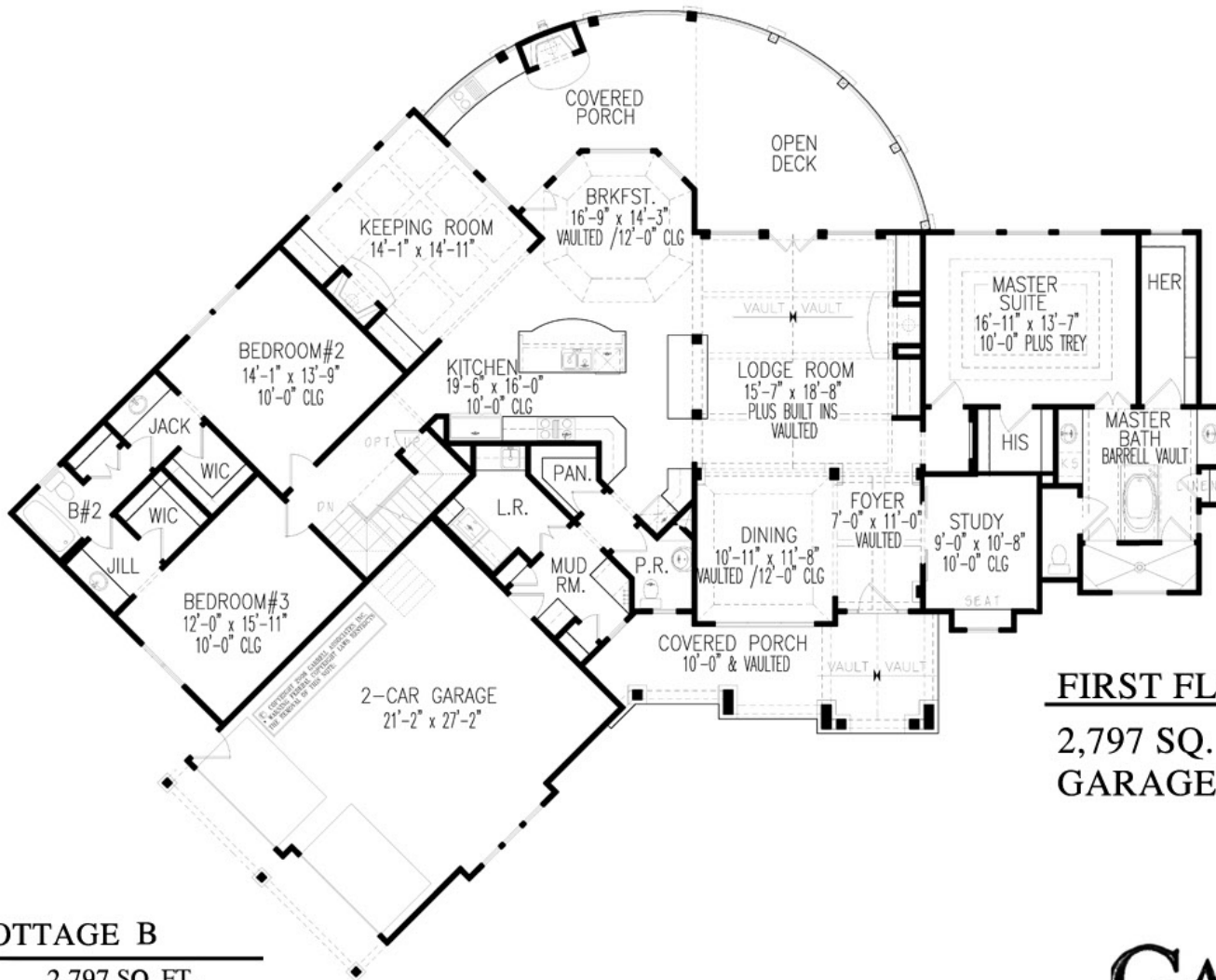




## NANTAHALA COTTAGE B

PLAN # 17091                      2,797 SQ. FT.  
WIDTH 97' 10"  
DEPTH 77' 8"  
FOUNDATION: BASEMENT, CRAWL SPACE  
ARTIST'S CONCEPTION MAY VARY FROM ACTUAL PLAN  
Copyright 2017, Garrell Associates, Inc.


**GARRELL**   
ASSOCIATES INC.  
5991 PARKWAY NORTH BLVD., SUITE D  
CUMMING, GA 30040  
PH.(770)-614-3239 FAX(770)-614-5948  
[WWW.GARRELLASSOCIATES.COM](http://WWW.GARRELLASSOCIATES.COM)

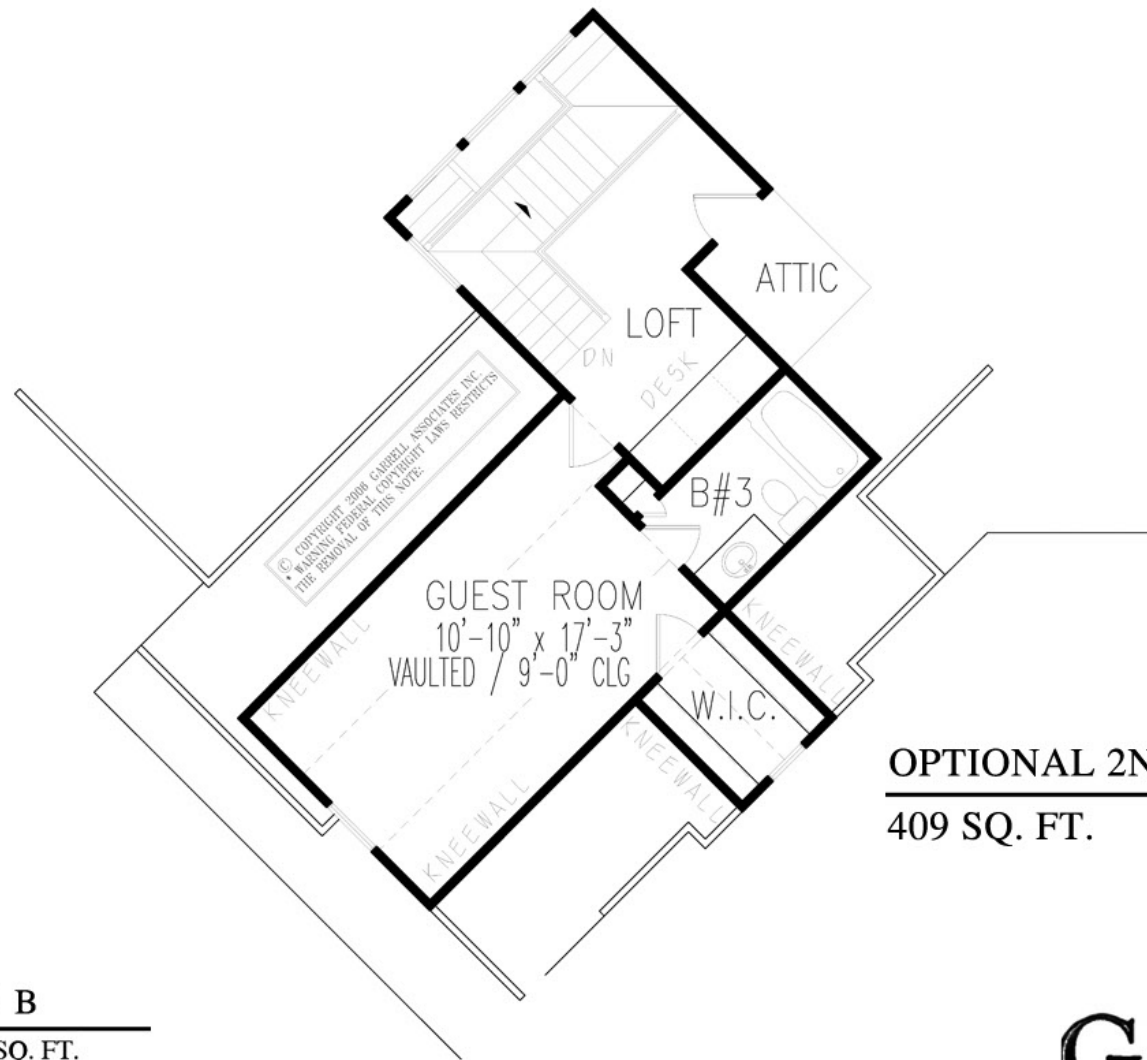


**FIRST FLOOR PLAN**  
**2,797 SQ. FT.**  
**GARAGE 586 SQ. FT.**

**NANTAHALA COTTAGE B**

PLAN # 17091                      2,797 SQ. FT.  
 WIDTH 97' 10"  
 DEPTH 77' 8"  
 FOUNDATION: BASEMENT, CRAWL SPACE  
 ARTIST'S CONCEPTION MAY VARY FROM ACTUAL PLAN  
 Copyright 2017, Garrell Associates, Inc.

**GARRELL**   
 ASSOCIATES INC.  
 5991 PARKWAY NORTH BLVD., SUITE D  
 CUMMING, GA 30040  
 PH.(770)-614-3239 FAX(770)-614-5948  
 WWW.GARRELLASSOCIATES.COM

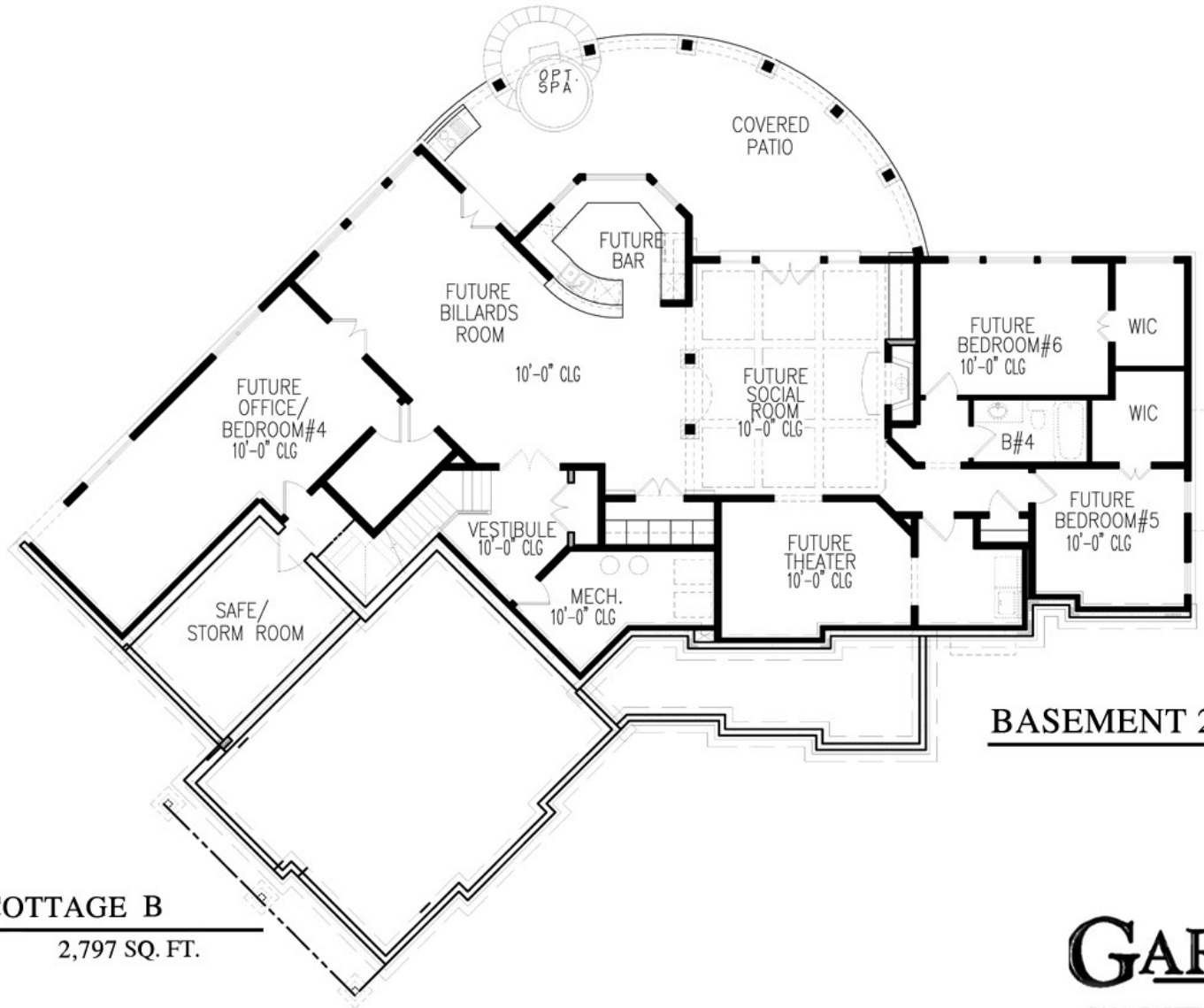


**OPTIONAL 2ND FLOOR PLAN**  
**409 SQ. FT.**

**NANTAHALA COTTAGE B**

PLAN # 17091                      2,797 SQ. FT.  
 WIDTH 97' 10"  
 DEPTH 77' 8"  
 FOUNDATION: BASEMENT, CRAWL SPACE  
 ARTIST'S CONCEPTION MAY VARY FROM ACTUAL PLAN  
 Copyright 2017, Garrell Associates, Inc.

**GARRELL**   
 ASSOCIATES INC.  
 5991 PARKWAY NORTH BLVD., SUITE D  
 CUMMING, GA 30040  
 PH.(770)-614-3239 FAX(770)-614-5948  
 WWW.GARRELLASSOCIATES.COM



**BASEMENT 2,377 SQ. FT.**

**NANTAHALA COTTAGE B**

PLAN # 17091      2,797 SQ. FT.

WIDTH 97' 10"

DEPTH 77' 8"

FOUNDATION: BASEMENT, CRAWL SPACE

ARTIST'S CONCEPTION MAY VARY FROM ACTUAL PLAN

Copyright 2017, Garrell Associates, Inc.

**GARRELL** 

ASSOCIATES INC.


5991 PARKWAY NORTH BLVD., SUITE D  
CUMMING, GA 30040  
PH.(770)-614-3239 FAX(770)-614-5948  
WWW.GARRELLASSOCIATES.COM



REAR ELEVATION

**NANTAHALA COTTAGE B**

PLAN # 17091                      2,797 SQ. FT.  
WIDTH 97' 10"  
DEPTH 77' 8"  
FOUNDATION: BASEMENT, CRAWL SPACE  
ARTIST'S CONCEPTION MAY VARY FROM ACTUAL PLAN  
Copyright 2017, Garrell Associates, Inc.

**GARRELL**   
ASSOCIATES INC.  
5991 PARKWAY NORTH BLVD., SUITE D  
CUMMING, GA 30040  
PH.(770)-614-3239 FAX(770)-614-5948  
[WWW.GARRELLASSOCIATES.COM](http://WWW.GARRELLASSOCIATES.COM)