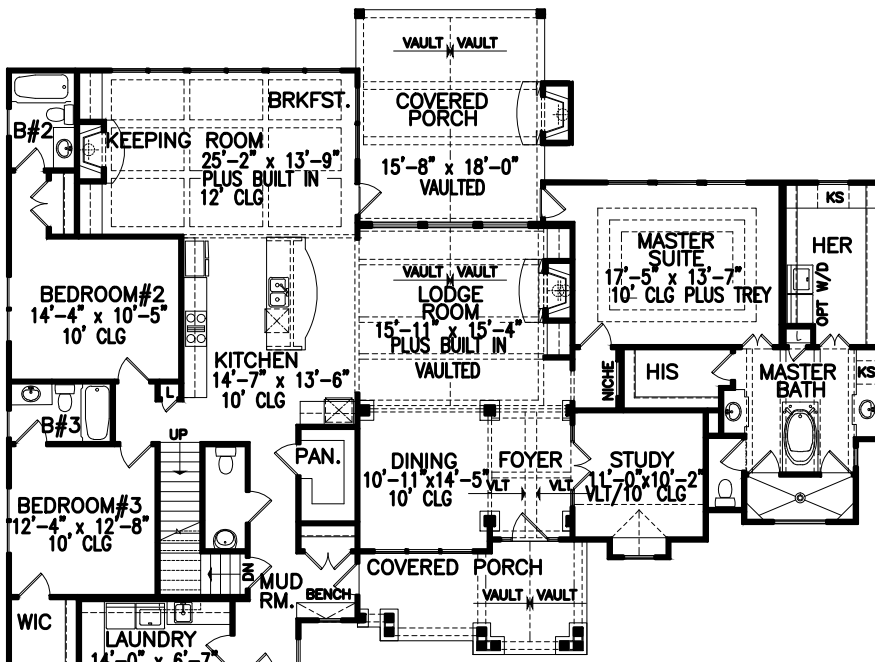
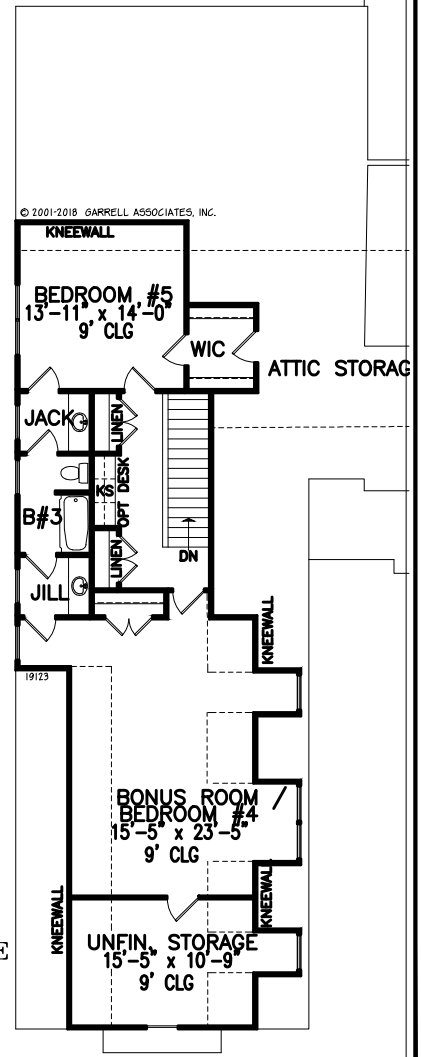




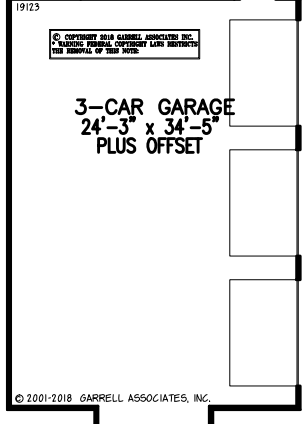
FRONT ELEVATION



**FIRST FLOOR PLAN**  
 2,795 SQ.FT.  
 GARAGE: 871 SQ.FT.  
 CEILING HGT 10'



**SECOND FLOOR**  
 950 SQ.FT.  
 176 SQ.FT. STORAGE  
 CEILING HGT 9'



**WOODFIN RIDGE COTTAGE D**  
 PLAN #19123  
 WIDTH 74'-10"      3,745 SQ.FT.  
 DEPTH 94'-5" (HOUSE 89'-5")      RIDGE HGT. 27'-6"  
 FOUNDATION: BASEMENT  
 ARTIST'S CONCEPTION MAY VARY FROM ACTUAL PLAN