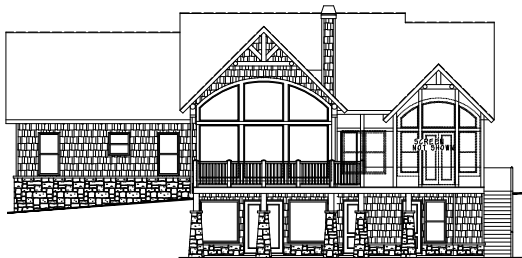




FRONT ELEVATION



REAR ELEVATION

WALKERS COTTAGE 2510

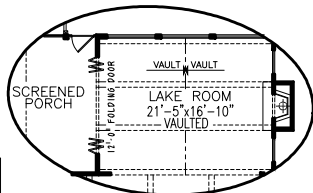
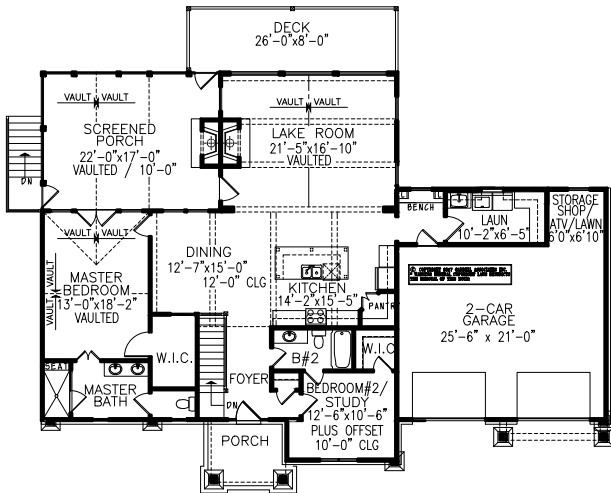
PLAN #17152
 WIDTH 70'-7"
 DEPTH 52'-4" (PLUS DECK)
 FOUNDATION: TERRACE

2,510 SQ.FT.
 27'-8" RIDGE HGT.

GARRELL

ASSOCIATES INC.

5991 PARKWAY NORTH BLVD., SUITE D
 CUMMING, GA 30040
 PH.(770)-614-3239 FAX(770)-614-5948
 WWW.GARRELLASSOCIATES.COM



OPT. LAKE ROOM W/ FOLDING DOOR

1st FLOOR PLAN
 1,718 SQ.FT.
 GARAGE 608 SQ.FT.

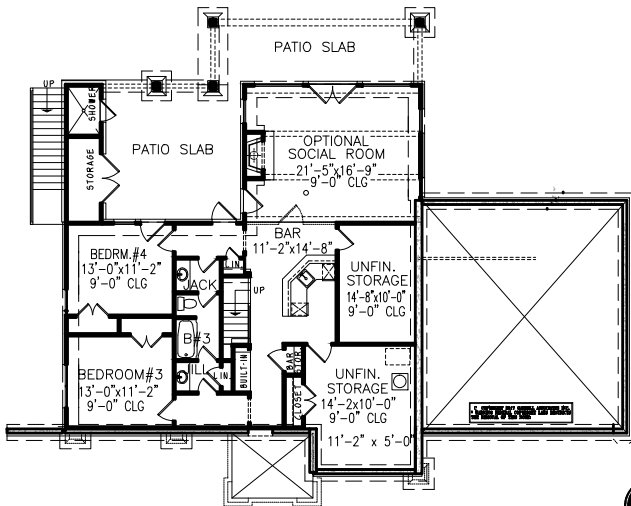
WALKERS COTTAGE 2510

PLAN #17152
 WIDTH 70'-7"
 DEPTH 52'-4" (PLUS DECK)
 FOUNDATION: TERRACE

2,510 SQ.FT.
 27'-8" RIDGE HGT.

GARRELL

ASSOCIATES INC.
 5991 PARKWAY NORTH BLVD., SUITE D
 CUMMING, GA 30040
 PH.(770)-614-3239 FAX(770)-614-5948
 WWW.GARRELLASSOCIATES.COM



TERRACE FLOOR PLAN
 FINISHED 792 SQ.FT.
 OPT. SOCIAL RM +371 SQ.FT.
 UNFINISHED +369 SQ.FT.

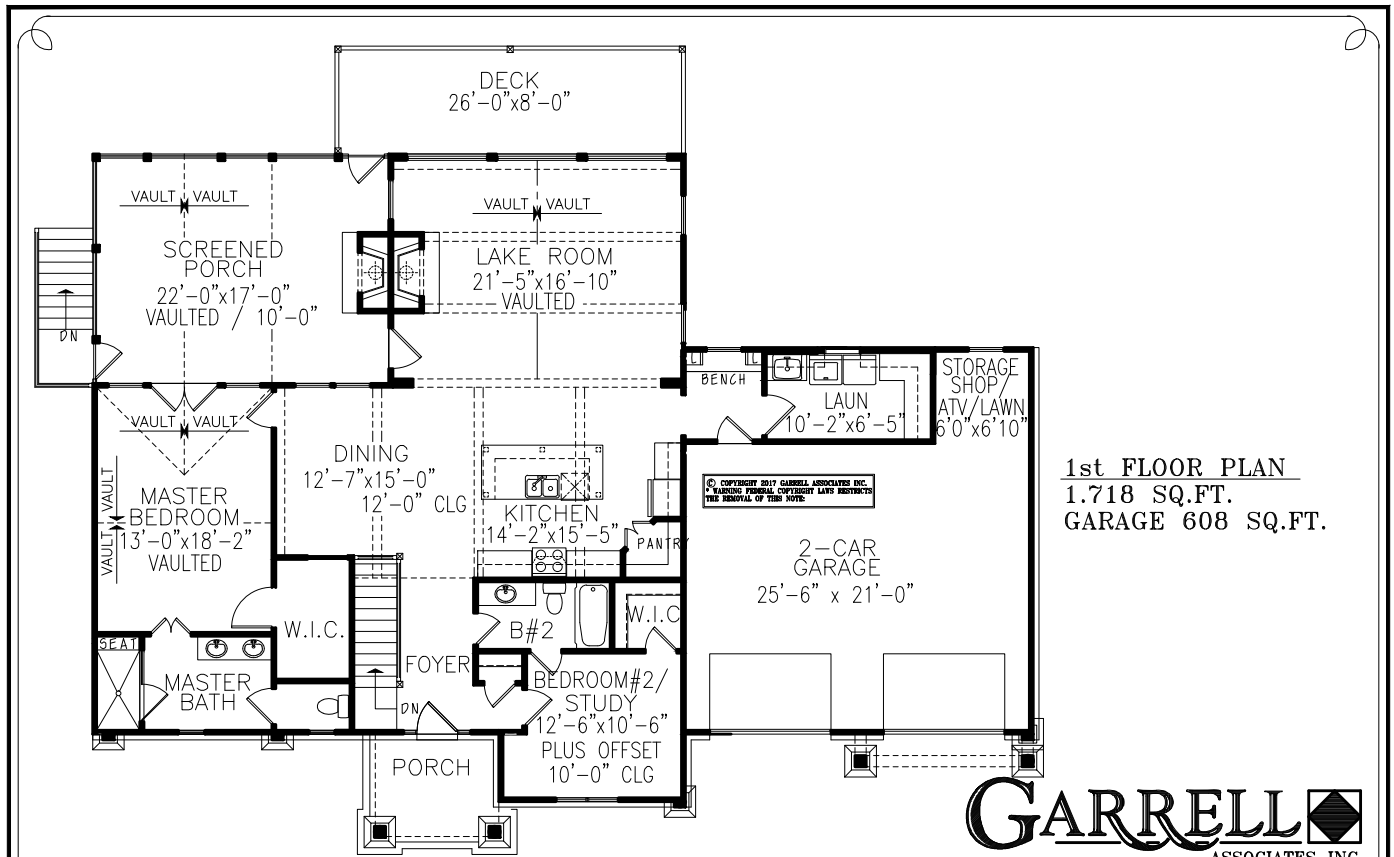
WALKERS COTTAGE 2510

PLAN #17152
 WIDTH 70'-7"
 DEPTH 52'-4" (PLUS DECK)
 FOUNDATION: TERRACE

2,510 SQ.FT.
 27'-8" RIDGE HGT.

GARRELL

ASSOCIATES INC.
 5991 PARKWAY NORTH BLVD., SUITE D
 CUMMING, GA 30040
 PH.(770)-614-3239 FAX(770)-614-5948
 WWW.GARRELLASSOCIATES.COM



1st FLOOR PLAN
1,718 SQ.FT.
GARAGE 608 SQ.FT.

GARRELL

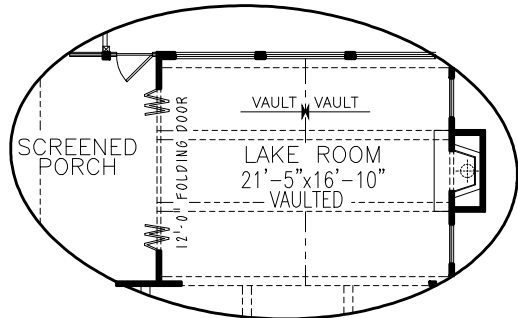
ASSOCIATES INC.

5991 PARKWAY NORTH BLVD., SUITE D
 CUMMING, GA 30040
 PH.(770)-614-3239 FAX(770)-614-5948
 WWW.GARRELLASSOCIATES.COM

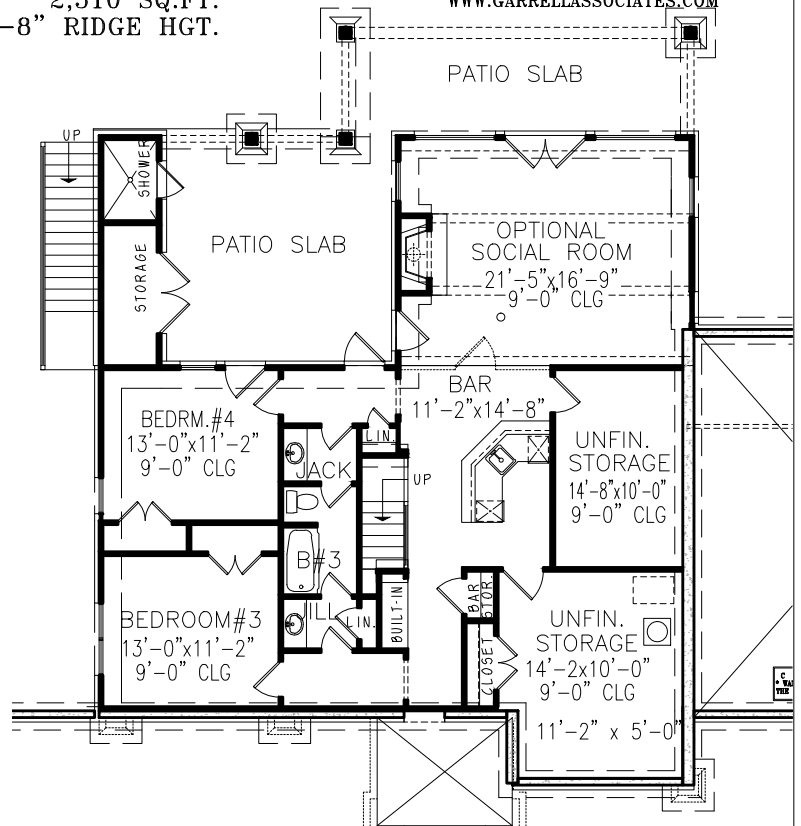
WALKERS COTTAGE 2510

PLAN #17152
 WIDTH 70'-7"
 DEPTH 52'-4" (PLUS DECK)
 FOUNDATION: TERRACE

2,510 SQ.FT.
 27'-8" RIDGE HGT.



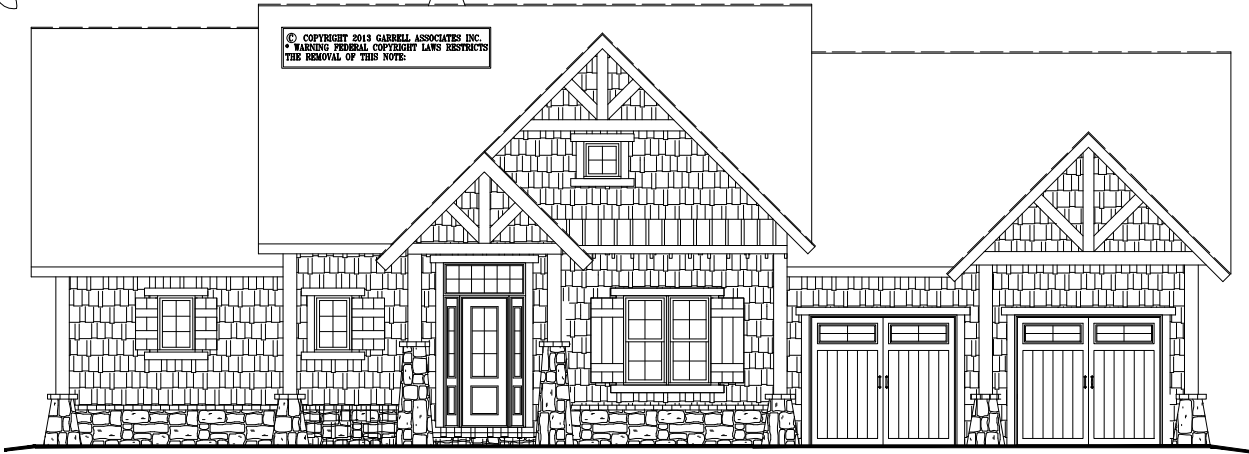
OPT. LAKE ROOM W/ FOLDING DOOR



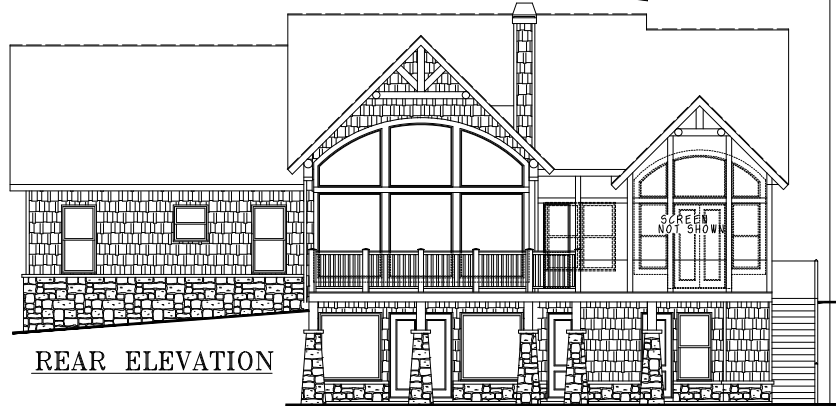
TERRACE FLOOR PLAN
 FINISHED 792 SQ.FT.
 OPT. SOCIAL RM +371 SQ.FT.
 UNFINISHED +369 SQ.FT.

ARTIST'S CONCEPTION MAY VARY FROM ACTUAL PLAN

© COPYRIGHT 2019 GARRELL ASSOCIATES INC.
 * WARNING FEDERAL COPYRIGHT LAWS RESTRICTS
 THE REMOVAL OF THIS NOTE:



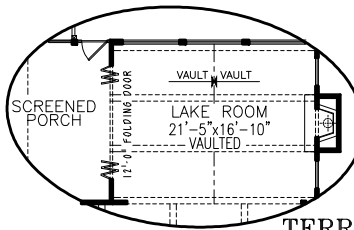
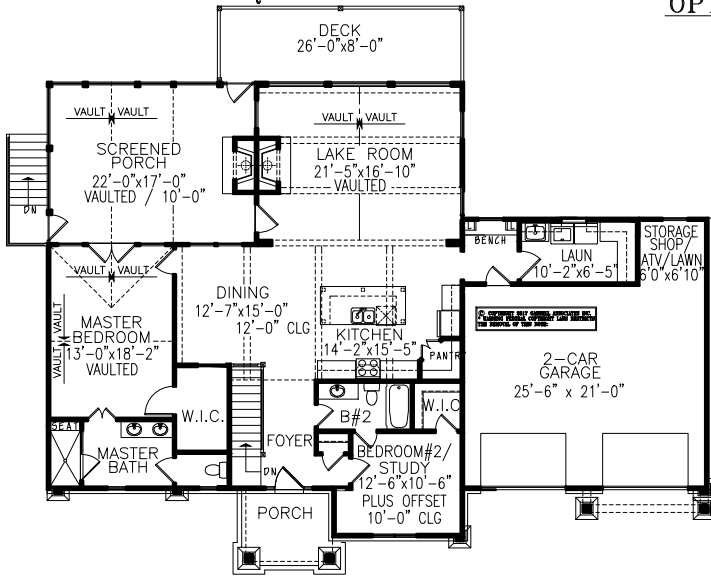
FRONT ELEVATION



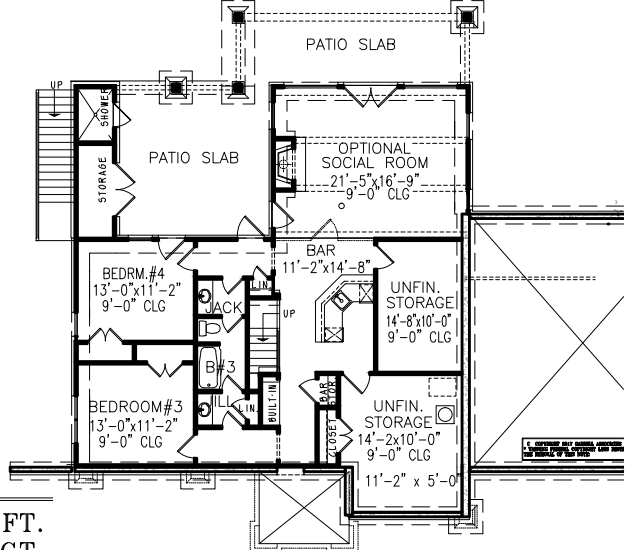
REAR ELEVATION

1st FLOOR PLAN
 1,718 SQ.FT.
 GARAGE 608 SQ.FT.

OPT. LAKE ROOM W/ FOLDING DOOR



TERRACE FLOOR PLAN
 FINISHED 792 SQ.FT.
 OPT. SOCIAL RM +371 SQ.FT.
 UNFINISHED +369 SQ.FT.



GARRELL 

ASSOCIATES INC.
 5991 PARKWAY NORTH BLVD., SUITE D
 CUMMING, GA 30040
 PH.(770)-614-3239 FAX(770)-614-5948
 WWW.GARRELLASSOCIATES.COM

WALKERS COTTAGE 2510

PLAN #17152
 WIDTH 70'-7"
 DEPTH 52'-4" (PLUS DECK)
 FOUNDATION: TERRACE

2,510 SQ.FT.
 27'-8" RIDGE HGT.

ARTIST'S CONCEPTION MAY VARY FROM ACTUAL PLAN

2001-17 GARRELL ASSOCIATES, INC.